

Contents

Customising	592–593
Castors with dead man's brake and drum brake	594–595
Brake and locking systems	596–599
Electric drive systems	600
Progressus wheels and castors	601–604
Wheels and castors with imperial measurements	605
Truck locks and jacks	606
Adapter plates and swivel heads	607–608
Wheels	609–611
Light-duty castors	612–613
Transport equipment castors	614–615
Heavy-duty castors	616–618
Stainless steel / synthetic / hygiene	619
Wheels and castors for forklift trucks, industrial trucks and AGV applications	620–621
Foot guard / wheel guard	622
Clamping and wheel sets	623

Special systems and solutions



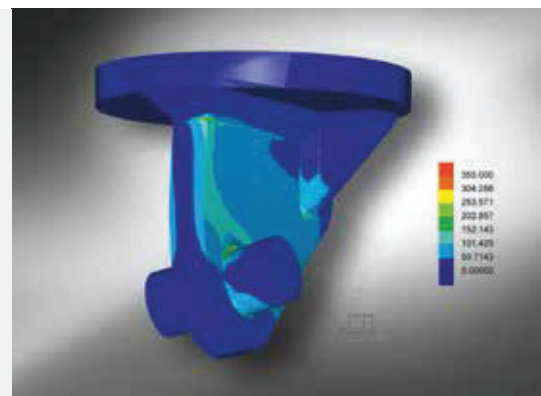
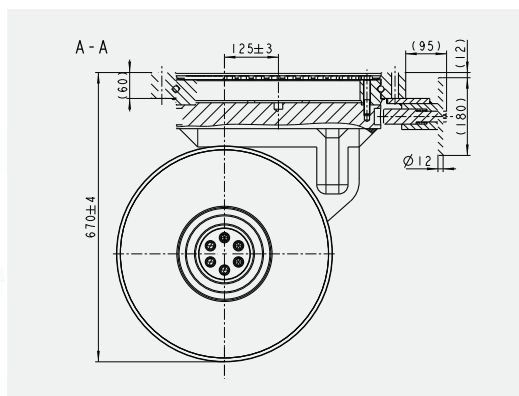
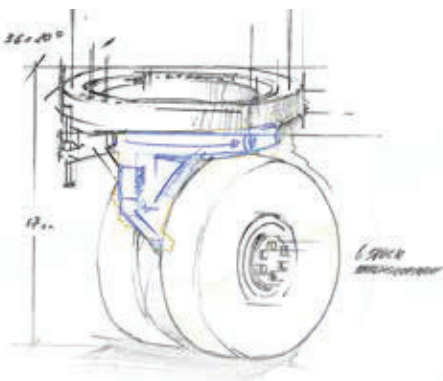
Listen. Consider. Realise.
Our strength: Customise.



Your requirements. Our idea.

Design. Drawings.

Details. Calculation.



Listen. Consider. Realise.
Our strength: Customise.

In addition to our standard ranges, we also provide a wide range of tailored special solutions for customer-specific applications.

We aim to provide the perfect wheel or castor to meet any requirement. We will draw on our expertise and experience to develop your tailored special solution in partnership with you. You give us your requirements and we make them a reality. We handle every stage of the process: from the first design drawings through to calculations and the manufacturing itself.

The components for our extensive standard range are manufactured in large quantities using highly-automated processes. Special solutions are frequently based on these well-established standard components. This allows us to realise customer-specific solutions in a quick and cost-effective manner.



Tooling. Production.



The perfect result: your individual solution.

Special systems and solutions

Swivel castors with dead man's brake

400 kg



Swivel castors with dead man's brake:

- Swivel castors with a dead man's brake are similar to drum-braked castors, but use an integrated spring for braking when the brake is not activated.
- The brake is activated by a hexagonal rod connected to the cam housing.
- The closed bracket design makes the brake shoes largely resistant to corrosion and dirt. This ensures that braking performance remains consistent regardless of moisture and dirt in the area.



Wheels: GEV series:

- tyres: high-quality elastic solid rubber in smooth rolling quality, hardness 65 Shore A, non-marking, grey
- wheel centre: made from robust grey cast iron, lacquered, colour silver
- brake mechanism: integrated into the wheel centre, zinc-plated, blue-passivated, Cr6-free



Wheels: GST series:

- tread: high-quality polyurethane-elastomer Blickle Softthane®, hardness 75 Shore A, colour green, non-marking, non-staining
- wheel centre: made from robust grey cast iron, lacquered, colour silver
- brake mechanism: integrated into the wheel centre, zinc-plated, blue-passivated, Cr6-free



Wheels: GTH series:

- tread: high-quality polyurethane-elastomer Blickle Extrathane®, hardness 92 Shore A, colour light brown, non-marking, non-staining
- wheel centre: made from robust grey cast iron, lacquered, colour silver
- brake mechanism: integrated into the wheel centre, zinc-plated, blue-passivated, Cr6-free



Swivel castors with a dead man's brake and swivel head brake:

- Swivel castors with a dead man's brake and swivel head brake are similar to drum-braked castors, but use an integrated spring for braking when the brake is not activated.
- Positive locking is used to stop the swivel head rotating.
- The brake is activated by a hexagonal rod connected to the cam housing.
- The closed bracket design makes the brake shoes largely resistant to corrosion and dirt. This ensures that braking performance remains consistent regardless of moisture and dirt in the area.

Swivel castors with dead man's brake	Swivel castors with a dead man's brake and swivel head brake	Wheel Ø [mm]	Wheel width [mm]	Load capacity [kg]	Bearing type	Total height [mm]	Plate size [mm]	Bolt hole spacing [mm]	Bolt hole Ø [mm]	Width across flats [mm]	Offset [mm]
L-GEV 200K-TM13-SG	L-GEV 200K-TTM13-SG	200	50	400	ball bearing	235	140 x 110	105 x 75-80	11	13	65
L-GST 200K-TM13	L-GST 200K-TTM13	200	50	400	ball bearing	235	140 x 110	105 x 75-80	11	13	65
L-GTH 200K-TM13	L-GTH 200K-TTM13	200	50	400	ball bearing	235	140 x 110	105 x 75-80	11	13	65

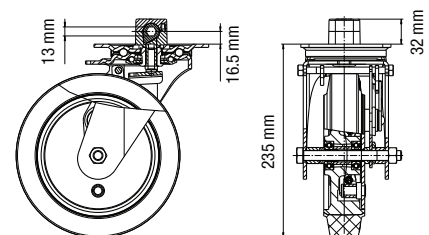
Braking can place swivel castors under a significant amount of additional stress, depending on the mass which needs to be braked. We recommend using an additional safety factor of 2.0-3.0 when designing the vehicle / chassis.



Versions / options

	directional lock (separate) 1 x 360°	other wheel designs	switching cam with width across flats 11 mm
Technical description page	115		
Product code suffix	RI-05.03	GB, GBS series	
Available for	all	upon request	upon request

- operating angle: max. 38°
- torque required to release the brake: < 10 Nm
- braking force: > 400 N



Special systems and solutions

Fixed castors with drum brake and dead man's brake

450–900 kg



Fixed castor with drum brake

Fixed castor with dead man's brake



Fixed castors with drum brake:

- Fixed castors with a drum brake can be activated with a variety of features, e.g. a lever arm or a cable pull.
- The closed bracket design makes the brake shoes largely resistant to corrosion and dirt. This ensures that braking performance remains consistent regardless of moisture and dirt in the area.



Wheels: GEV series:

- tyres: high-quality elastic solid rubber in smooth rolling quality, hardness 65 Shore A, non-marking, grey or black
- wheel centre: made from robust grey cast iron, lacquered, colour silver
- brake mechanism: integrated into the wheel centre, zinc-plated, blue-passivated, Cr6-free



Wheels: GST series:

- tread: high-quality polyurethane-elastomer Blickle Softthane®, hardness 75 Shore A, colour green, non-marking, non-staining
- wheel centre: made from robust grey cast iron, lacquered, colour silver
- brake mechanism: integrated into the wheel centre, zinc-plated, blue-passivated, Cr6-free



Wheels: GTH series:

- tread: high-quality polyurethane-elastomer Blickle Extrathane®, hardness 92 Shore A, colour light brown, non-marking, non-staining
- wheel centre: made from robust grey cast iron, lacquered, colour silver
- brake mechanism: integrated into the wheel centre, zinc-plated, blue-passivated, Cr6-free



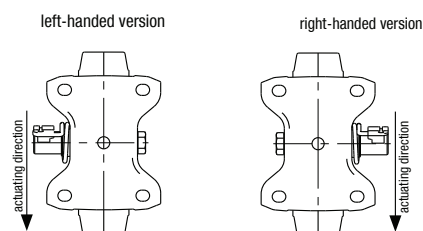
Fixed castors with dead man's brake:

- Fixed castors with a dead man's brake are similar to drum-braked castors, but use an integrated spring for braking when the brake is not activated. The brake can be released using a lever arm or cable pull.
- The closed bracket design makes the brake shoes largely resistant to corrosion and dirt. This ensures that braking performance remains consistent regardless of moisture and dirt in the area.

Fixed castors with drum brake	Fixed castors with dead man's brake *	Wheel Ø [mm]	Wheel / tyre width [mm]	Load capacity [kg]	Bearing type	Total height [mm]	Plate size [mm]	Bolt hole spacing [mm]	Bolt hole Ø [mm]
B-GEV 160K-TB	B-GEV 160K-TM	160	50	450	ball bearing	195	140 x 110	105 x 75–80	11
B-GEV 160K-TB-SG	B-GEV 160K-TM-SG	160	50	450	ball bearing	195	140 x 110	105 x 75–80	11
B-GTH 160K-TB	B-GTH 160K-TM	160	50	600	ball bearing	195	140 x 110	105 x 75–80	11
BH-GTH 160K-TB	BH-GTH 160K-TM	160	50	800	ball bearing	202	140 x 110	105 x 75–80	11
B-GEV 200K-TB	B-GEV 200K-TM	200	50	600	ball bearing	235	140 x 110	105 x 75–80	11
B-GEV 200K-TB-SG	B-GEV 200K-TM-SG	200	50	600	ball bearing	235	140 x 110	105 x 75–80	11
B-GST 200K-TB	B-GST 200K-TM	200	50	600	ball bearing	235	140 x 110	105 x 75–80	11
B-GTH 200K-TB	B-GTH 200K-TM	200	50	600	ball bearing	235	140 x 110	105 x 75–80	11
BH-GST 200K-TB	BH-GST 200K-TM	200	50	800	ball bearing	245	140 x 110	105 x 75–80	11
BH-GTH 200K-TB	BH-GTH 200K-TM	200	50	900	ball bearing	245	140 x 110	105 x 75–80	11

* L or R must be added to the product code for left-handed and right-handed versions.

- actuation path: approx. 10–12 mm
- operating angle: approx. 13°–15°
- actuation force: < 250 N
- braking force: > 500 N



Special systems and solutions

Brake systems

1 Cable pull-operated drum brake



Fixed castor with drum brake



Example application

Structure and function

- activated using a cable pull (as shown above) or lever arm
- when actuated, the brake shoes are pressed onto the cast wheel centre, which functions as a drum brake

Advantages

- consistently high braking force, even in wet conditions
- short actuation path

More information

- A detailed description and overview of fixed castors with drum brakes is provided on page 595.

2 Cable pull-operated dead man's brake



Fixed castor with dead man's brake



Example application

Structure and function

- activated using a cable pull (as shown above) or lever arm
- Before the brake is actuated, the spring presses the brake shoes onto the cast wheel centre, which functions as a drum brake.
- The brake releases when actuated.

Advantages

- consistently high braking force, even in wet conditions
- safety
- short actuation path

More information

- A detailed description and overview of fixed castors with dead man's brakes is provided on page 595.

3 Dead man's brake for hexagonal connection



Swivel castor with dead man's brake



Example application

Structure and function

- can be activated by a hexagonal rod

Advantages

- consistently high braking force, even in wet conditions
- safety
- short actuation path

More information

- A detailed description and overview of swivel castors with drum brakes is provided on page 594.

Special systems and solutions

Brake systems for central foot operation

1 Two swivel castors connected with a brake lever



Swivel castor with "ideal-stop" brake



Example application

Structure and function

- brake lever does not swivel with the castor
- "ideal-stop" brake lever comes with holes as standard for easy fitting of a brake lever to connect two brake levers together

Advantages

- saves time as two castors can be braked and released with a single motion
- comfort
- occupational safety

More information

- for a technical description of the ideal-stop brake, see page 112
- available for Blickle LK, LH and LEX bracket series

2 Two or four swivel castors connected with a rod



Swivel castor with "central-stop" brake



Example application

Structure and function

- multiple swivel castors connected with a rod
- rods are connected to the cam housing of the castor using a hexagonal rod

Advantages

- saves time as two or four castors can be braked with a single motion
- comfort
- occupational safety
- small operating angle
- can be actuated from both sides of the trolley

More information

- for a technical description of the "central-stop" brake, please refer to page 113
- available for Blickle LE, L, LK and LH bracket series

3 Multiple fixed castors connected with a rod



Fixed castor with "central-stop" brake



Example application

Structure and function

- multiple fixed castors connected with a rod
- rod connected to the cam housing within the bracket using a hexagonal rod

Advantages

- saves time as multiple castors can be braked with a single motion
- small operating angle

More information

- for a technical description of the "central-stop" brake, please refer to page 113
- special solution available upon request

Special systems and solutions

Brake systems for central directional lock

- 1** Directional lock, can be retrofitted, operated with a foot pedal, latching



Swivel castor with mounted directional lock

- 2** Directional lock, can be retrofitted, operated with a foot pedal, self-latching



Swivel castor with mounted directional lock

- 3** Directional lock for hexagonal connection



Swivel castor with central directional lock



Example application



Example application



Example application

Structure and function

- Directional locks (separate) are fitted to the top plate of the swivel castor. Actuating the brake lever removes the directional lock, allowing the castor to swivel.
- Pushing the brake lever upwards allows the castors to latch back in when travelling straight (blocks the swivel motion of the castors).

Advantages

- multiple directional locks connected together using a rod possible
- can be retrofitted to standard castors
- stability + flexibility at the workstation

More information

- see page 115 for technical information
- available for many Blickle bracket series

Structure and function

- Actuating the brake lever unlocks the directional lock, allowing the castor to swivel. When the swivel castor is aligned in the direction of travel, the spring moves the brake lever back to its latched position.

Advantages

- can be retrofitted to standard castors
- stability + flexibility at the workstation

More information

- special solution, available upon request

Structure and function

- multiple swivel castors connected with a hexagonal rod
- swivel castor is fixed using a pre-tensioned spring in the swivel head (converts swivel castor to fixed castor)
- castor can swivel again when the hexagonal rod is actuated

Advantages

- When 6 castors are used per carriage, the central castors can function as fixed castors when the carriage is towed or moved laterally during manual operation.

More information

- special solution, available upon request

Special systems and solutions

Brake systems for central directional brake

4 Directional lock for pull cable connection, integrated



Swivel castor with cable pull directional lock



Example application

Structure and function

- directional lock integrated into the bracket
- directional lock released using a cable pull

Advantages

- can be actuated by hand

More information

- special solution, available upon request

5 Directional lock for pull cable connection, can be retrofitted



Swivel castor with mounted directional lock



Example application

Structure and function

- threaded hole for connecting a cable pull

More information

- special solution, available upon request

6 Directional lock for side actuation, can be retrofitted



Swivel castor with mounted directional lock



Example application

Structure and function

- brake lever is actuated in a horizontal direction rather than in vertical direction
- suitable for applications with limited space

More information

- special solution, available upon request

Special systems and solutions

Electric drive systems

Minimum force required to move and control



- Modular kit:**
- I** Ergonomic cockpit solutions
 - II** Control and battery unit
 - III** Electrically-driven fixed castors
 - IV** Suitable swivel castors

The modular drive systems in the ErgoMove series consist of electrically-driven fixed castors, standardised controls and Blickle cockpit solutions. They are used for high-performance applications where ergonomics is an important factor. The physical strain on the operator is reduced significantly during internal material transport due to considerably less amount of effort required compared to manual operation.

The ErgoMove drive systems are designed for a variety of transport equipment, trailer systems and special applications with an overall weight of up to 4,000 kg. The high thrust of up to 2 x 55 daN ensures that the operator uses much less force. The integrated dead man's brake system guarantees safe operation in accordance with DIN EN 1175-1 (Safety of industrial trucks-Electrical requirements).

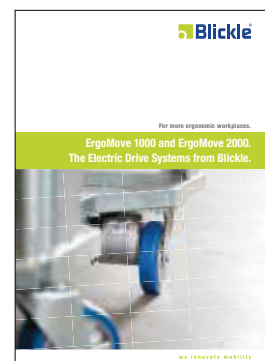


Electrically-driven fixed castor



Ergonomic cockpit

For additional information, please refer to our special brochure "ErgoMove-The Electric Drive Systems from Blickle"



Special systems and solutions

Progressus wheels and castors

Corrosion-resistant castors with enclosed swivel head for demanding requirements



- I** Meets demanding hygiene and cleanliness requirements thanks to enclosed and sealed swivel head with robust four-point bearing
- II** Robust and resilient stainless steel bracket
- III** Suitable for autoclaves and machine washing up to +134 °C for different wheel series

The high-quality stainless steel products of Progressus compliments Blickle's comprehensive range of wheels and castors. Progressus' products are well-established in the medical, chemical and food industries.

The unique enclosed and sealed swivel head meets the most demanding hygiene and cleanliness standards. In addition to medical facilities, these castors are particularly well-suited for wet environments like industrial kitchens, butcher shops and dairies.

Progressus also provides premium hospital bed castors for highly sensitive areas.



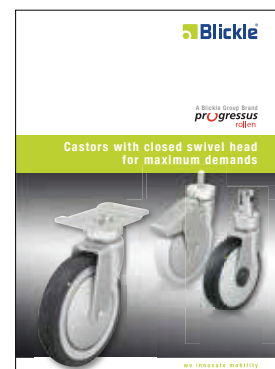
Corrosion-resistant castors with enclosed swivel head



Hospital bed castors with enclosed swivel head

A Blickle Group Brand
progressus
rollen

Additional information is provided in our special brochure "Progressus castors - Castors with closed swivel head for maximum demands"



Special systems and solutions

Wheels with elastic solid rubber tyres and thermoplastic polyurethane tread, with aluminium wheel centre

90–200 kg

-25 °C to +134 °C

Tread:

PGV series:

- high-quality elastic solid rubber in smooth rolling quality, hardness 80 Shore A
- outstanding operational comfort
- excellent floor preservation, low-noise operation
- low rolling resistance
- colour grey, non-marking

ALEV series:

- high-quality elastic solid rubber in smooth rolling quality, hardness 80 Shore A
- outstanding operational comfort
- excellent floor preservation, low-noise operation
- low rolling resistance
- colour grey, non-marking
- vulcanised onto the wheel centre

ALTPU series:

- high-quality thermoplastic polyurethane (TPU), hardness 92 Shore A
- low rolling and swivel resistance
- high abrasion resistance
- colour dark grey, non-marking, non-staining

Wheel centre:

- PGV series: die-cast aluminium, bolted
- ALEV/ALTPU series: die-cast aluminium

Other features:

- PGV/ALTPU series: temperature resistance from -25 °C to +134 °C
- ALEV series: temperature resistance from -25 °C up to +80 °C, up to +100 °C for short periods
- PGV series: resistant to disinfectant, hydrogen peroxide and benzine
- PGV/ALTPU series: suitable for autoclaves
- ALTPU series: electrically conductive

Additional details:

- wheel series: page 82
- bearing types: page 84–85
- chemical resistance: page 51



A Blickle Group Brand
progress
rollen

Wheels	Wheel Ø (D) [mm]	Tyre width (T2) [mm]	Load capacity [kg]	Bearing type	Axle bore Ø (d) [mm]	Hub length (T1) [mm]
PGV series						
PGV 84/10XR-SG	84	24	90	roller bearing	10	30
PGV 105/10XR-SG	105	24	120	roller bearing	10	30
PGV 120/12XR-SG	120	30	150	roller bearing	12	43
PGV 150/12XK-SG	150	30	200	ball bearing	12	36
PGV 186/25XK-SG	186	38	200	ball bearing	25	42*
ALEV series						
ALEV 151/15XK-SG	150	32	200	ball bearing	15	32
ALTPU series						
ALTPU 120/15XK-ELS	120	32	120	ball bearing	15	32
ALTPU 125/15XK-ELS	125	32	120	ball bearing	15	32
ALTPU 150/15XK-ELS	150	32	150	ball bearing	15	32

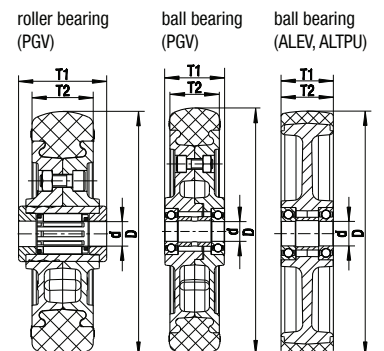
* Clamping length = 40 mm

Versions / options



electrically conductive version, black tyre electrically conductive version, black tyre

Technical description page	50	50
Product code suffix	-EL	-EL
Available for	PGV series all	ALEV series all



Special systems and solutions

Corrosion-resistant castors with top plate, wheel with elastic solid rubber tyres

90–200 kg

-25 °C to +134 °C

Bracket: LPX/BPX series:

- high-quality chromium-nickel steel (1.4301 / AISI304), corrosion-resistant, vibration-ground finished
- all parts including axle material are corrosion-resistant

Swivel bracket:

- four-point ball bearing for optimal absorption of vertical and horizontal forces
- hardened precision fork head made from corrosion-resistant steel (1.4034 / AISI420)
- excellent swivel characteristics, particularly resistant to impact and shocks
- grease nipple

Wheels: PGV series:

- tread: high-quality elastic solid rubber in smooth rolling quality, hardness 80 Shore A, colour grey, non-marking
- wheel centre: die-cast aluminium, bolted

Other features:

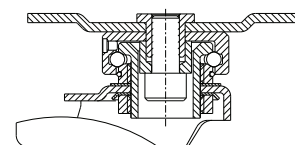
- suitable for autoclaves

Additional details:

- bracket series: page 102
- brakes: page 112
- wheel series: page 602
- bearing types: page 84–85



A Blickle Group Brand
progressus
rollen



Swivel castors	Fixed castors	Swivel castor with "stop-fix" brake	Wheel Ø [mm]	Tyre width [mm]	Load capacity [kg]	Bearing type	Total height [mm]	Plate size [mm]	Bolt hole spacing [mm]	Bolt hole Ø [mm]	Offset of the swivel castor [mm]
LPX-PGV 84XR-PG1-SG-FA	BPX-PGV 84XR-PG1-SG-FA		84	24	90	roller bearing	124	100 x 60	82 x 42	8.5	33
LPX-PGV 105XR-PG1-SG-FA	BPX-PGV 105XR-PG1-SG-FA		105	24	120	roller bearing	146	100 x 60	82 x 42	8.5	30
LPX-PGV 120XR-PG2-SG-FA	BPX-PGV 120XR-PG2-SG-FA	LPX-PGV 120XR-PG2-FI-SG-FA	120	30	150	roller bearing	164	120 x 80	100 x 60	11	45
LPX-PGV 150XK-PG2-SG-FA	BPX-PGV 150XK-PG2-SG-FA	LPX-PGV 150XK-PG2-FI-SG-FA	150	30	200	ball bearing	195	120 x 80	100 x 60	11	45
LPX-PGV 186XK-PG3-SG-FA	BPX-PGV 186XK-PG3-SG-FA	LPX-PGV 186XK-PG3-FI-SG-FA	186	38	200	ball bearing	236	140 x 80	110 x 50	11	55

Versions / options



	electrically conductive version, black tyre	with side wheel brake	with directional lock	other plate dimensions
Technical description page	50		115	
Product code suffix	-EL	-SRA	-RI	
Available for	all	all	wheel Ø 120–186 mm upon request	upon request

Special systems and solutions

Hospital bed castors with fitting and integrated switching cam, with central brake system



150–200 kg

-25 °C to +134 °C

Bracket: LPZ series:

- high-quality chromium-nickel steel (1.4301 / AISI304), corrosion-resistant, vibration-ground finished
- four-point ball bearing for optimal absorption of vertical and horizontal forces
- hardened precision fork head made from chromed heat-treatable steel
- excellent swivel characteristics, particularly resistant to impact and shocks
- stem fitting with hexagonal switching cams
- grease nipple

Wheels: ALEV/ALTPU series

- tread:
 - ALEV series: high-quality elastic solid rubber in smooth rolling quality, hardness 80 Shore A, colour grey, non-marking
 - ALTPU series: high-quality thermoplastic polyurethane (TPU), hardness 92 Shore A, colour dark grey, non-marking, non-staining
- wheel centre: die-cast aluminium

Other features:

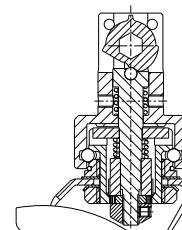
- ALTPU series: temperature resistant between -25 °C and +134 °C
- ALEV series: temperature resistant between -25 °C and +80 °C; up to +100 °C for short periods
- ALTPU series: suitable for autoclaves, electrically conductive

Additional details:

- bracket series: page 102
- brakes: page 113
- wheel series: page 602
- bearing types: page 84–85



A Blickle Group Brand
progressus
rollen



Swivel castors	Wheel Ø [mm]	Tyre width [mm]	Load capacity [kg]	Bearing type	Total height [mm]	Stem Ø [mm]	Stem length [mm]	Operating angle	Width across flats [mm]	Offset [mm]
ALEV series										
LPZ-ALEV 151XK-CS11-SG-FA	150	32	200	ball bearing	194	32	50	2 x 30°	11	43
ALTPU series										
LPZ-ALTPU 150XK-CS11-ELS-FA	150	32	150	ball bearing	194	32	50	2 x 30°	11	43

Versions / options



	electrically conductive version, black tyre	with central and directional lock	load-dependent directional latch with ball pressure screw	different operating angle	switching cam with flat design (D profile)	special colours (electrostatic powder coating)
Technical description page	50					
Product code suffix	-EL	-CS11R12	-R1R22			
Available for	ALEV series	all	upon request	upon request	upon request	upon request

Special systems and solutions

Wheels and castors with imperial measurements



In addition to castors designed to metric standards, Blickle also provides wheels and castors with special inch dimensions in accordance with US standards (ANSI ICWM:2012, ASME B56.11.1).

Top plate fittings, mounting heights and wheel dimensions were designed specifically to meet the requirements of the US market.

The Blickle "American Standard Casters" range is complemented by the special Blickle LEH bracket series. Using a hardened bearing seat makes it possible for even light-duty brackets to reach load capacities of up to 570 kg (1,250 lbs). The LEH bracket series is available in combination with the plate size 4" x 4 1/2".



Pressed steel castors in inches with top plate fitting
2 1/2" x 3 5/8" and 4" x 4 1/2"



Welded heavy-duty castors in inches with top plate fitting
4 1/2" x 6 1/4"

Additional information is provided in our special brochure "American Standard Casters"



Special systems and solutions

Truck locks and jacks

Truck locks

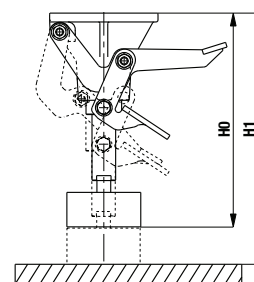
Truck locks keep transport equipment in a resting position. They are attached directly to the transport equipment. Operating the pedal takes some of the load off the transport equipment without raising it up.

When operated, the truck lock deflects by approximately 10 mm. The maximum surface contact pressure in combination with suitable swivel and fixed castors amounts to approx. 60 kg. The following truck lock with a plate size of 100 x 85 mm can be combined with the LE, L and LK castor series. The truck locks with a plate size of 140 x 110 mm can be combined with the LK (wheel Ø 125x50-200 mm) LH, LO and LS castor series. Other versions are available upon request. Zinc-plated, blue-passivated, Cr6-free.

Product code	Total height unactuated	Total height actuated, extended	Plate size [mm]	Bolt hole spacing [mm]	Bolt hole diameter [mm]
	(H0) [mm]	(H1) [mm]			
FF 100-1	108	138	100 x 85	80 x 60	9
FF 125-1	133	163	100 x 85	80 x 60	9
FF 125	142	180	140 x 110	105 x 75-80	12.3
FF 150	170	208	140 x 110	105 x 75-80	12.3
FF 160	175	213	140 x 110	105 x 75-80	12.3
FF 200	217	255	140 x 110	105 x 75-80	12.3

FF 100-1 + FF 125-1

FF 125 - FF 200



Jacks

Jacks are used to raise transport equipment up in their resting position. They are attached directly to the transport equipment. Actuating the pedal raises the transport equipment up.

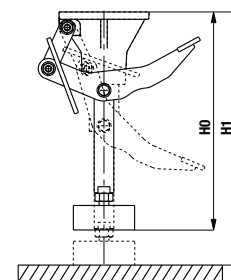
Jacks can be combined with a wide range of castor series. Jacks perform at their best when the total height of the actuated jack (H1) exceeds the total height of the fixed and swivel castors by 5 mm.

Depending on the weight of the operator, they can provide a lifting force of between 150 kg and 250 kg.

The vertical load on the jack must not exceed 500 kg when raised.

Zinc-plated, blue-passivated, Cr6-free.

Product code	Total height unactuated	Total height actuated	Plate size [mm]	Bolt hole spacing [mm]	Bolt hole Ø [mm]
	(H0) [mm]	(H1) [mm]			
WH 160	166	209	140 x 110	105 x 75-80	12.3
WH 200	207	250	140 x 110	105 x 75-80	12.3
WH 250	257	300	140 x 110	105 x 75-80	12.3



Special systems and solutions

Adapter plates

Adapter plates can be used to compensate for differences between the mounting height of different castors. Adapter plates can also be used to modify the mounting height of the transport equipment. Adapter plates are available in steel (zinc-plated, blue-passivated, Cr6-free) and synthetic (nylon, black) designs. Untreated steel adapter plates are also available for welding upon request.

Steel adapter plates, zinc-plated

Product code	Plate size [mm]	Bolt hole spacing [mm]	Bolt hole diameter [mm]	Height [mm]
APS1-02,5	100 x 85	80 x 60	9	2,5
APS1-08	100 x 85	80 x 60	9	8
APS3-04	140 x 110	105 x 75-80	11	4
APS3-08	140 x 110	105 x 75-80	11	8
APS3-10	140 x 110	105 x 75-80	11	10



Synthetic adapter plates

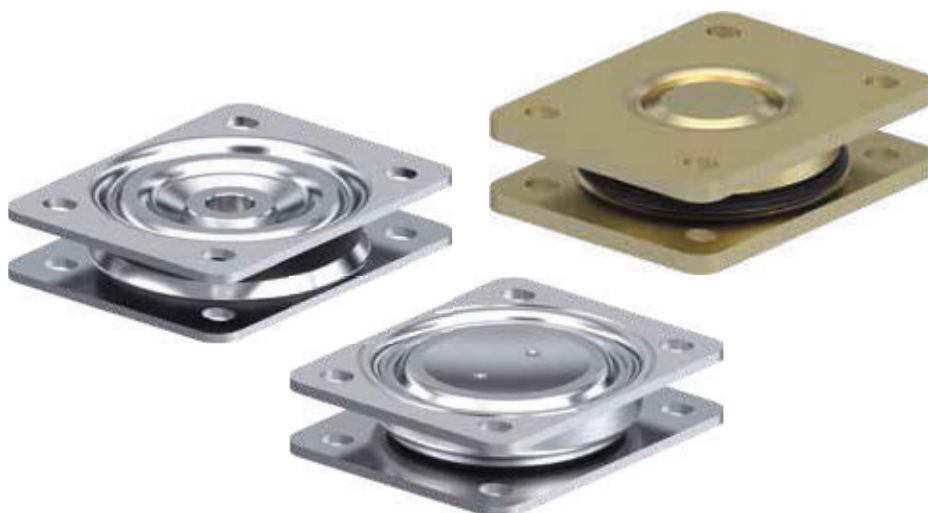
Product code	Plate size [mm]	Bolt hole spacing [mm]	Bolt hole diameter [mm]	Height [mm]
AP1-10	100 x 85	80 x 60	9	10
AP3-17	140 x 110	105 x 75-80	11	17



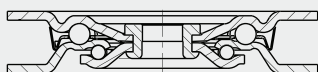
Special systems and solutions

Swivel heads

Swivel heads can be used for a wide variety of applications: rotating plates, rotating platforms, flatbed turntables or axle-pivot steering systems. When combined with standard fixed castors, they can provide castor systems without an offset, which are easy to steer.

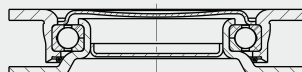


1 DK-L series



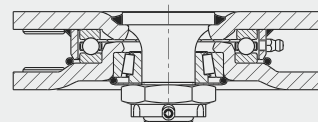
- pressed steel
- double ball bearing
- strong central kingpin
- swivel head seal
- minimum swivel head play and smooth rolling characteristic and increased service life thanks to the special dynamic Blickle riveting process
- zinc-plated, blue-passivated, Cr6-free

2 DK-LUH series



- strong pressed steel
- four-point ball bearing for extremely heavy loads
- enclosed and sealed swivel head
- particularly resistant to impact and shocks due to specially-shaped hardened bearing seats
- zinc-plated, blue-passivated, Cr6-free

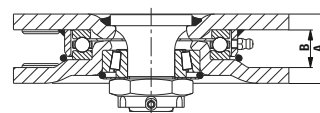
3 DK-LS series



- particularly robust welded steel construction
- axial grooved ball bearing ISO 104 and tapered roller bearing ISO 355
- welded central kingpin, extremely stable, bolted and secured
- dust and splash-proof
- grease nipple
- zinc-plated, yellow-passivated, Cr6-free

Swivel heads	Load capacity* [kg]	Plate size [mm]	Bolt hole spacing [mm]	Bolt hole Ø [mm]	Flange plate height (A) [mm]	Flange plate internal clearance (B) [mm]
DK-L-3	400	140 x 110	105 x 75-80	11	28	20
DK-LUH-3	1,000	140 x 110	105 x 75-80	11	31	21
DK-LS-3	1,500	140 x 110	105 x 75-80	11	37	21
DK-LS-35	2,500	175 x 140	140 x 105	14	44	24
DK-LS-36	2,500	200 x 160	160 x 120	14	44	24
DK-LS-38	5,500	255 x 200	210 x 160	18	60	25

* With central axial load



Special systems and solutions

Guide rollers

1 Guide roller for high impact loads



- impact-resistant special synthetics
- temperature resistance: up to 300 °C

2 Guide roller as end wheel version for external applications



- synthetic wheel centres with polyurethane tread
- wheel centre sealed on one side to protect against corrosion

3 Guide roller for intralogistics robots



- drive wheel with polyurethane tread
- electrostatically conductive
- individual laser marking

4 Guide roller for sorting systems



- polyurethane tread with optimised rolling resistance
- electrostatically conductive
- optimised for constant use (24/7)

5 Transport roller for rubber belt drives



- polyurethane tread with groove for rubber belt drives

6 Precision guide roller



- vibration-absorbing polyurethane tread
- high precision

7 Guide roller for wet areas



- UV-resistant tread made from TPE
- integrated holes for fixing a magnetic holder

8 Double pulley with additional locking mechanism



- wheel centre made of special synthetic material for two wire cables
- if the cable under load breaks, the other cable performs an emergency stop function

9 Compact pulley for warehouse logistics



- nylon wheel centre
- special ball bearing, stabilised to prevent tipping, with special inner ring

Special systems and solutions

Running wheels

1 Design wheel for scooters



- tread made from thermoplastic polyurethane
- spoked wheel with central ball bearing
- individual special colour

2 Design wheel for golf carts



- foam tyres for a high level of operational comfort, even on unpaved surfaces
- weight-optimised wheel with wide tread

3 Rollers for Mecanum wheels



- FEM-optimised tread and wheel centre geometries for high load capacities

4 Flame-resistant heavy-duty wheel (DIN EN 45545)



- wheel made from flame-retardant nylon
- special seal with sea water-resistant grease

5 Flanged wheel with pressed-on polyurethane band



- vibration-absorbing polyurethane tread provides ideal movement on rail profile
- also used as a drive wheel due to high traction

6 Heavy-duty wheel for high-rack forklifts



- for heavy dynamic loads
- weight-optimised wheel centre design
- bayonet brake for wheel cover

7 Heavy-duty wheel for bulldozers



- elastic solid rubber press-on band on cast nylon wheel centre
- corrosion-resistant version

8 Double flanged wheel with special tread geometry



- concave tread for ideal motion on round tubes
- synthetic wheel centres to save weight

9 Heavy-duty wheel for circular welding equipment



- polyurethane tread
- diameter up to 1,000 mm
- load capacity up to 50,000 kg
- designed for drum applications

Special systems and solutions

Drive wheels

1 Drive wheel for construction equipment



- elastic solid rubber press-on band and robust, lacquered steel wheel centre
- gear with internal or external gearing

2 Drive wheel with hub keyway for cleaning equipment



- foam-filled tyres (puncture-proof)
- maintenance-free

3 Heavy-duty drive wheel for wet cleaning equipment



- slip-resistant rubber compound on a cast wheel centre with hub keyway
- non-marking, oil-resistant, high traction in wet areas

4 Heavy-duty drive wheel with tapered tread



- shrink fit cast nylon press-on band
- steel wheel centre for fixing on conical element

5 Heavy-duty drive roller for circular welding equipment



- roller with polyurethane tread
- wheel width of up to 1,000 mm
- load capacities: up to 100,000 kg

6 Drive wheel with extremely high grip in difficult conditions



- reinforced synthetic rim for use in aggressive environments
- secure torque transmission, even with low air pressure

7 Heavy-duty wheel for chain drives



- polyurethane tread
- cast wheel centres with hub fitting for pinion

8 Chain wheel made of cast nylon



- stainless steel drive hub for extremely high torque transmission cast and inseparable
- individual wheel centre design

9 Heavy-duty drive wheel for external use



- multicomponent tyre on cast nylon wheel centre
- corrosion-resistant version

Special systems and solutions

Light-duty castors

Light-duty castors are our small all-rounders with an already high load capacity. Light-duty castors are mainly used indoors on equipment and devices like shop equipment, laboratory equipment, furniture, sport equipment and industrial kitchen equipment.

Blickle light-duty castors offer high maneuverability, smooth rolling performance and low rolling resistance with a low unit weight. We provide a wide range of solutions, the majority of which are integrated into end products.

1 Light-duty swivel castor with optimised installation for floor rollers



- fixed using central threaded hole with thread brake
- combines the advantages of a top plate fitting with a bolt hole

2 NSF-certified light-duty swivel castor with special top plate



- small gaps to meet demanding hygiene and cleanliness requirements
- wheel bearing protected with synthetic thread guard

3 Light-duty swivel castor with wheel brake



- wheel brake can be activated in areas that are difficult to access or covered by bracket sections

4 Cleanroom light-duty swivel castor with special fitting



- bracket chromed
- electrically conductive
- suitable for clean rooms in ISO class 4 according to DIN EN ISO 14644-1

5 Spring-loaded swivel castor



- stem fitting with integrated suspension and fixing tab
- ladder lowers to the ground under load

6 Light-duty swivel castor with special fixing for square tubes



- swivel castor with fixing option for horizontal square tubes
- suitable for easy horizontal movement

Special systems and solutions

Light-duty castors

7 Light-duty swivel castor with special fixing for aluminium profiles



- bracket and thread guard electrostatic powder-coated
- optimised corrosion protection
- electrically conductive

8 Light-duty swivel castor with central locking for patient wheelchairs



- central and directional lock, can be operated separately
- grooved ball bearing integrated into swivel head with reduced tilt

9 Light-duty swivel castor with central wheel and swivel head brake



- central brake system combined with stem fitting
- high level of operational comfort thanks to elastic solid rubber tyres, non-marking

10 Light-duty swivel castor with reduced interference circle



- special brake lever design for reduced interference circle
- fixing bolt pressed in the bolt hole for easy assembly

11 Light-duty swivel castor for sport equipment



- compact top plate fitting
- bracket electrostatic powder-coated, excellent corrosion protection
- electrically conductive

12 Light-duty twin wheel swivel castor for operating tables



- sealed swivel head and wheel bearing
- chromed bracket, compact design, electrical conductive

13 Light-duty twin wheel swivel castor with foot guard



- steel foot guard for increased occupational safety
- electrically conductive version

14 Light-duty twin wheel swivel castor with load-dependent wheel brake



- bracket with integrated suspension allowing for wheel braking under load
- spring tension tailored to application

15 Electrically conductive spring-loaded light-duty swivel castor



- castor in electrically conductive version as fifth wheel to ensure dissipation of electrostatic charge

Special systems and solutions

Transport equipment castors

Transport equipment castors are used for a variety of industrial applications. They have a load capacity of up to 1,000 kg and are used both indoors and outdoors. Our transport equipment castors are used on transport carts, machines, scaffolding and waste containers.

Blickle's special solutions are used to meet special requirements. Our solutions come from our expertise in materials and production technology, our creative approach and our many years of experience.

1 Castors with imperial dimensions in accordance with ASME B56.11.1



- fixing dimensions and mounting heights in inches, specifically for the US market
- please request our "American Standard Casters" catalogue

2 Air Cargo castor



- synthetic wheel with high-impact resistance
- bracket with enclosed swivel head

3 Triple wheels swivel castor



- particularly good floor preservation due to extremely low floor pressure

4 Scaffolding castor with wheel and swivel head brake



- leading brake
- stem fitting with cross hole for easy installation on scaffolding cross hole

5 Scaffolding castor with adjustable offset and special wheel and swivel head brake



- adjustable offset for easy handling and high load capacity
- brake can be actuated on both sides

6 Scaffolding castor with adjustable offset and height adjustment



- adjustable offset for easy handling and high load capacity
- spindle to compensate for height differences

Special systems and solutions

Transport equipment castors

7 Swivel castor with combined total and directional lock



- directional lock with cable pull connection and four latching positions
- brake lever with particularly low force required to actuate and release the brake

8 Levelling castor for mobile industrial robots



- integrated truck lock with adjustable tilt and threaded spindle for fixing the castor to the base

9 Swivel castor for mobile hospital beds



- two-row angular contact ball bearing for a particularly robust swivel head
- compact design with integrated direction reset device

10 Swivel castor with extended release lever



- easier to release the brake lever in tight spaces
- easier to operate with safety shoes

11 Swivel castor with special brake release lever



- wheel brake with shortened release lever for tight spaces

12 Detachable support castor for platform applications



- domed anchor nuts for quick attachment
- adjustable height thanks to thread in stem fitting

13 Swivel castor with "ideal-stop" and additional release lever



- all parts of the locking system are fixed and always accessible
- brake released by actuating the release lever from above

14 Fixed castor with wheel brake



- brakes a unit in place

15 Fixed castor with dead man's brake



- brake can be controlled with cable pull or Bowden cable
- dead man's brake on the tread

Special systems and solutions

Heavy-duty castors

Blickle heavy-duty castors are designed for use in tough conditions. Blickle heavy-duty castors provide ergonomic handling, an increased service life and good floor preservation whenever high load capacities or high speeds are required in small spaces. They have a particularly stable design and particularly robust bearings.

Highly-tailored solutions are frequently required for special applications. We can provide the perfect solution for every application, whether that might be a castor with mounting height adjustment, special fittings, a reduced interference circle or spring-loaded applications.

1 Triple castor for stage equipment



- triple castor for optimised rotation
- low mounting height
- black bracket surface finish

2 Heavy-duty triple castor for transport platforms



- triple castor for optimised rotation
- low mounting height

3 Heavy-duty tandem roller for use on rails



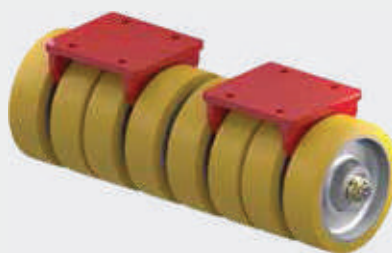
- compact design with extremely high load capacity
- optimised load distribution thanks to rocker design

4 Heavy-duty swivel castor with direction reset device



- direction reset device with latch function
- castor aligned after lowering the plate

5 Eight fixed castors for heavy loads



- excellent load capacity and low mounting height

6 Swivel castor with no offset for 4-wheel steering



- swivel castor with no offset for pivoting the wheel on the spot
- fixing tab for forced steering of the castor

Special systems and solutions

Heavy-duty castors

7 Heavy-duty swivel castor for cleaning equipment



- outdoor application
- castor screwed on vertically with special fixing tab

8 Heavy-duty twin wheel fixed castor with integrated drum brake



- drum brake can be activated using a cable pull

9 Fixed castor with flanged motor



- fixed castor with polyurethane tread
- brushless DC motor with electro-mechanical brake system

10 Stabiliser castor for forklift trucks with special fitting



- installed using top plate fitting with guide stem
- compact design with swivel head bearing in stem fitting
- swivel fork in forged design

11 Heavy-duty twin wheel swivel castor with special directional lock



- directional lock with pluggable direction restriction system
- castor can be rotated on the spot using a tube (connector on bracket)

12 Swivel castor with electromagnetic drum brake and swivel head brake



- electromagnetic mechanism
- simultaneous swivel head brake and wheel brake

13 Chain steering system



- precise maneuvering of pushed trailers in tight spaces with minimum effort
- 90° lateral motion possible
- precise and tight turning circles for pulled units
- primarily for trailers with a total weight of 300-1,000 kg and max. speed of 6 km/h

Special systems and solutions
Heavy-duty spring-loaded castors

1 Heavy-duty spring-loaded twin wheel swivel castor for aircraft maintenance



- suspension makes it possible to lower the castor under load

2 Spring-loaded heavy-duty swivel castor



- compact design
- polyurethane spring for absorption

3 Height-adjustable heavy-duty twin wheel swivel castor



- height adjustment
- height of castor can be adjusted to change the contact pressure of the drive wheel

4 Spring-loaded heavy-duty fixed castor with special fitting



- fixed with special flange plate

5 Spring-loaded heavy-duty twin wheel swivel castor



- specially-tailored spring tension
- twin wheel system for easier handling

6 Heavy-duty swivel castor with multi-component tyres



- bracket with special direction reset device
- special fixing plate

7 Heavy-duty spring-loaded twin wheel swivel castor for aircraft maintenance



- suspension for optimised operation on uneven surfaces
- directional lock for stable movement

8 Spring-loaded heavy-duty twin wheel swivel castor



- wheels made of cast nylon
- hinged polyurethane plate construction

9 Spring-loaded heavy-duty swivel castor for trailer applications



- no offset, making it possible to swivel on the spot
- fixing tab for forced steering of the castor

Special systems and solutions
Stainless steel / synthetic / hygiene

1 Detectable synthetic wheel for food production



- wheel centre in blue with metal fibres
- wheel particles can be detected in food production processes

2 Stainless steel swivel castor with enclosed swivel head for medical applications



- heat-resistant hub disc wheel with exchangeable rubber tyres
- suitable for autoclaves

3 Stainless steel swivel castor with direction reset device



- additional directional lock can be provided in two positions
- suitable for machine washing in accordance with DIN 18867-8

4 Pressed steel swivel castor, bracket with zinc-nickel coating



- long-term corrosion protection for the bracket (approx. 720 h in salt spray test)
- alternative to stainless steel bracket

5 Synthetic twin wheel swivel castor for industrial kitchen applications



- extremely small gaps to meet demanding hygiene requirements
- optional dead man's brake available with cable pull connection available

6 Corrosion-resistant stainless steel swivel castor for the food industry



- with grease nipple and additional seal in the swivel head

7 Stainless steel swivel castor for AGV applications



- particularly low castor width
- internal axle screw fitting with no protrusion
- automatic direction reset device

8 Stainless steel swivel castor for AGV applications



- low castor width
- automatic direction reset device
- suitable for machine washing in accordance with DIN 18867-8

9 Stainless steel piano castor



- high-quality design
- wheel and bracket made of stainless steel
- wheel brake for manual actuation

Special systems and solutions

Wheels and castors for forklift trucks and industrial trucks

The running gear of industrial trucks and forklift trucks are subject to a wide range of specific requirements due to their variety of application conditions. These include the dimensions of fittings and the installation area, or suspension and vibration absorption properties for specific vehicles.

Over the past few decades, we have developed a wide range of solutions in close collaboration with our customers tailored to their specific requirements. We continue to implement this on the basis of our extensive experience derived from working together with a wide range of renowned manufacturers of industrial trucks. The products described below are a selection of the solutions we have provided for clients.

1 Spring-loaded heavy-duty swivel castor with polyurethane torsion spring and special fitting



- ultra-compact castor structure
- components in forged design

2 Stabiliser for industrial trucks



- hydraulic damper for stability

3 Suspension unit for industrial trucks



- ensures optimal load on the drive wheel
- adjustable spring tension

4 Stabiliser for industrial trucks



- height adjustment
- height of castor can be adjusted to change the contact pressure of the drive wheel

5 Stabiliser for industrial trucks



- height can be adjusted to generate the optimum pressure on the drive wheel
- suspension

6 Heavy-duty stabiliser for industrial trucks



- height adjustment
- height of castor can be adjusted to change the contact pressure of the drive wheel
- twin castor version for improved swiveling

Special systems and solutions

Wheels and castors for AGV applications

Automated guided vehicles (AGV) place significant demands on wheels and castors in very small installation areas. Castors for AGV have a much higher level of operational performance compared to standard castors as they are frequently in permanent use. Because of these application conditions, automated guided vehicles frequently require wheel tread designs that are specifically optimised for AGV applications and ball bearings that are designed for permanent operation.

Some bracket solutions are designed specifically for AGV applications and guarantee a long service life and maintenance-free operation. From ultra-compact swivel castors through to heavy-duty solutions with electromagnetic braking systems, Blickle has a wide range of solutions for AGV applications.

1 Heavy-duty wheel with optimised tread geometry



- extremely high load capacities at low speed when in constant use
- ball bearing designed specifically for constant use

2 Compact AGV castor with stem fitting



- compact castor with small offset for simultaneous heavy loads
- easy installation with positive locking holder and threaded stem

3 Precision swivel castor for AGV



- very compact design with extremely low mounting height tolerance
- special ball bearing swivel head for excellent operational performance

4 Compact drive wheel for AGV objects



- polyurethane tread with special colour for high load capacities and low swivel and rolling resistance

5 Spring-loaded AGV swivel castor



- compact design and small offset for high maneuverability
- the suspension ensures that the wheels remain in contact with the ground at all times

6 Swivel castor with electromagnetic dead man's brake



- extremely high brake retaining forces
- AGV safety component used in an emergency or in the event of a power cut (brakes close)

Special systems and solutions

Foot guard / wheel guard

All of Blickle's foot guard solutions have a common goal: improving occupational safety. Blickle foot guard solutions prevent wheels or fast moving objects from causing foot injuries. In addition to protecting vehicle operators, they minimise the risk of the wheel being damaged by large objects in the path of the vehicle.

Blickle provides a variety of plastic, steel and spring-loaded foot guard solutions. The castors can also be fitted with cleaning brushes and wipers. These remove dirt and small items to protect both the tread and the floor.

1 Spring-loaded castor with foot guard



- parallel guide makes sure the foot guard is always parallel to and a constant distance from the floor

2 Heavy-duty swivel castor with wiper



- wiper unit protects the wheel against obstacles

3 Castor with spring-loaded foot guard



- improved occupational safety and greater protection against foot injuries

4 Castor with foot guard and cleaning brushes



- stripping of small parts with a brush
- protects wheel and floor against damage

5 Castor with spring-loaded foot guard



- thresholds can be crossed

6 Swivel castor with tread wiper



- brush for cleaning the wheel tread

Special systems and solutions

Clamping and wheel sets

Wheel centres for clamping sets can be installed quickly and easily using a clamping element. Clamping sets can also be used for both axial and radial fixing at the same time. This means that the drive wheel can absorb drive forces while being fixed in its position on the axle.

Wheel sets involve fitting multiple wheels to an axle as a single unit. The advantage of having a complete set is that it reduces the amount of work involved to fit the wheels.

1 Polyurethane wheel for clamping set applications



- polyurethane tread with special colour
- threaded holes for shaft seal

2 Corrosion-resistant wheel for external crane systems



- hydrolysis-resistant polyurethane tread
- nylon wheel centre with molded stainless steel hub
- clamping set application possible

3 Wheel centre for permanent deployment



- polyurethane tread with optimised rolling resistance and high dynamic load resistance
- clamping set application possible

4 Wheel set for pallet trucks for particularly smooth motion



- elastic solid rubber tread
- as alternative to conventional tandem rollers for pallet trucks

5 Wheel set for fully-automated milking system



- flanged wheels installed and sealed on cylindrical axle
- optimised for permanent deployment (24/7)

6 Wheel set with heavy-duty wheels for transport equipment



- heavy-duty wheels installed on square axle
- elastic rubber tread for absorption and high speeds



Contents

General information

Blickle product code system	626
Addresses of Blickle sales subsidiaries and representative offices	627–629
Alphabetic product / series number list	630–632
Alphabetic keywords list	633
Blickle product information	635

Blickle product code system

Blickle product codes have the following structure:

Wheels

Each product code begins with a letter or combination of letters referring to a specific Blickle wheel series. This is followed by the wheel diameter. The number after the slash is the axle diameter.

If there is a third number after a hyphen, it is the hub length.

The final letters **G**, **R**, **K** and **PR** stand for the different wheel bearings (**G** - plain bore, **R** - roller bearing, **K** - ball bearing and **PR** - spherical roller bearing). The final letters **KA** and **KF** stand for a ball bearing with an integrated synthetic thread guard.

Any additional combinations of letters designate versions or options.

Product code: VLE 250/20-75K-SG	VLE	250	20	75	K	SG
Wheel series: heavy duty wheels with super-elastic solid rubber tyres						
Wheel diameter: 250 mm						
Axle diameter: 20 mm						
Hub length: 75 mm						
Wheel bearing: ball bearing in the wheel hub						
Version: non-marking, grey tyre						

Swivel and fixed castors

Each Blickle swivel bracket series begins with an **L** or **HR** for levelling castors. Each Blickle fixed bracket series uses a combination of letters beginning with a **B**.

The product codes for fixed castors and swivel castors therefore comprise the code for the bracket series and the code for the wheel series.

The next number usually indicates the wheel diameter. The letters **G**, **R**, **K** and **PR** indicate the wheel bearing. The final letters **KA** and **KF** stand for a ball bearing with an integrated synthetic thread guard.

Any number at the end is used to distinguish between different top plate fitting, bolt hole and stem designs.

Any additional combinations of letters designate versions or options.

Product code: LH-SPO 125K-3-ST-FA	LH	SPO	125	K	3	ST	FA
Bracket series: pressed steel swivel bracket, heavy-duty design							
Wheel series: heavy duty nylon wheel							
Wheel diameter: 125 mm							
Wheel bearing: ball bearing in the wheel hub							
Fixing: top plate fitting no. 3 (see page 74: Fitting types)							
Options: "stop-top" brake							
Options: thread guard							

Versions / options

Letters and / or numbers are added to the product code for different versions, e.g. special tyres (non-marking grey, electrically conductive, etc.) and options (e.g. brake systems, thread guard, etc.). These are listed under "Versions / options" on the relevant pages (see "Product code suffix").

Addresses of Blickle sales subsidiaries and representative offices

Australia

QHDC Blickle Australia Pty Ltd
60 Newheath Drive
Arundel
QLD 4215
Phone: +(07) 5582 0000
E-Mail: sales@qhdcblickle.com.au
Internet: www.qhdcblickle.com.au

Austria

Blickle Räder + Rollen GmbH
Gewerbestraße 20
5082 Gröding
Phone: +43 6246 217 00 -0
Fax: +43 6246 217 00 -700
E-mail: info@blickle.at
Internet: www.blickle.at

Bangladesh

Pioneer Trade International
250, Haq Tower (2nd floor)
Bongshal Road
(Near Manoshi Cinema Hall)
Nawabpur, Dhaka-1100
Phone: +8802-57165407
Mob.: +8801711851063-4
E-mail: info@ptigroupbd.com

Belarus

Syndic-Bel Ltd.
Peredovaya Str. 6, office 115
220070 Minsk
Phone: +375-17-336-12-57
E-mail: info@syndic.by
Internet: www.syndic.by

Belgium

Blickle bv
Duwijkstraat 17
2500 Lier
Phone: +32 3 828 01 54
Fax: +32 3 827 00 46
E-mail: info@blickle.be
Internet: www.blickle.be

Bulgaria

DINIS Ltd.
227A, Tzar Boris III Blvd.
1618 Sofia
Phone: +359 2 955 6200
Fax: +359 2 955 6127
E-mail: info@dinis.bg
Internet: www.blickle.bg

Canada

Blickle Canada Inc.
265, Avenue Liberté
Candiac, QC, J5R 3X8
Phone: +1 450 619 6914
+1 800 463 2526
Fax: +1 450 845 6262
+1 877 463 2500
E-mail: orders@blickle.ca
Internet: www.blickle.ca

China

Blickle Castors (Taicang) Co., Ltd.
Building A, No. 8 Xi Xin Road
Fortune Land Euro-US Industrial Park
Taicang, Jiangsu 215411
Phone: +86 (0) 512 5320 7717
E-mail: sales@blickle.cn
Internet: www.blickle.cn

Colombia

Rodamex Colombia SAS
Calle 63a # 30-33
Bogotá
Phone: +57 1 300-45-58
Fax: +57 312-586-5776
E-mail: ventascalombia@rodamex.com.mx
Internet: www.rodamex.com.co

Costa Rica

Tecnofijaciones
Costado este del Banco Nacional,
Condominio Horizontal JW Bodega #21,
La Uruca, San José
Phone: +506 2256-8115
Fax: +506 2256-8117
E-mail: contacto@tecnofijacionescr.com
Internet: www.tecnofijacionescr.com

Croatia

HIDROMETAL d.o.o.
Ive Pavlica 17 a
31222 Bizovac
Phone: +385 31 673 014
Fax: +385 31 673 014
E-mail: hidrometal@net.hr
Internet: www.hidrometal.net

Czech Republic

Blickle, a.s.
Maříkova 32
621 00 Brno
Phone: +420 541 420 821
Fax: +420 541 420 820
E-mail: info@blickle.cz
Internet: www.blickle.cz

Denmark

KS Gruppen A/S
Troensevej 20
Postbox 8110
9220 Aalborg Øst
Phone: +45 9815 1511
Fax: +45 9815 7011
E-mail: ks@ks-gruppen.dk
Internet: www.ks-gruppen.dk

Egypt

German Institute For Foreign Trade „GFT“
76, El Gomhorya Street
Mamr Abualgoukh – fifth floor
Ramses, Cairo
Showroom:
55, El Nady el Riady Street
Faisal, Giza
Phone: +20 2 35691787
Mob.: +20 111 060 1330
Fax: +20 2 35691297
E-mail: info@gft-egypt.com

Estonia

ARTIUM ITC OÜ
Klaasi 4
50409 Tartu
Phone: +372 740 9400
Fax: +372 740 9404
E-mail: info@artium.ee
Internet: www.artium.ee

Finland

Blickle Oy
Tiilenpolttajankuja 3
01720 Vantaa
Phone: +358 9 540 7520
Fax: +358 9 540 75225
E-mail: myynti@blickle.fi
Internet: www.blickle.fi

France

Blickle France SAS
Zone Artisanale
2 rue du Commerce
68420 Herrlisheim/Colmar
Phone: +33 389 492425
Fax: +33 389 493945
E-mail: info@blickle.fr
Internet: www.blickle.fr

Germany (Headquarters)

Blickle Räder+Rollen
GmbH u. Co. KG
Heinrich-Blickle-Str. 1
72348 Rosenfeld
Phone: +49 7428 932 0
Fax: +49 7428 932 209
E-mail: info@blickle.com
Internet: www.blickle.com

Greece

G.P. Dimitriadis S.A.
8 Mesologiou Str.
18545 Piraeus
Phone: +30 210 4129441
Fax: +30 210 4116736
E-mail: info@dimitriadissa.gr
Internet: www.dimitriadissa.gr

Guatemala

TECNIPESA
Calzada Atanacio Tzul 22-00
Centro Empresarial El Cortijo No. 2
Bodega 408 Zona 12
Guatemala Ciudad
Phone: +502 2428 5931
E-mail: ventas@tecnipesa.net
Internet: www.tecnipesa.net

Ferretería Lewonski, S.A.
Boulevard Liberación 2-29
Zona 9, 01009
Guatemala Ciudad
Phone: +502 2383 7800
Fax: +502 2383 7810
E-mail: ventas@lewonski.com
Internet: www.lewonski.com

Hong Kong

Sinoford Enterprises Limited
Flat B15/9F, Tonic Industrial Center
19 Lam Hing Street, Kowloon Bay
Kowloon
Phone: +852 2796 8829
Fax: +852 2799 9418
E-mail: cecilia.yeung@sinford.com.hk

Hungary

ROLL-N Ipari Kerekék Kft.
Hunor u. 44-46
1037 Budapest
Phone: +36 (1) 453 0169
+36 (1) 439-0290
E-mail: info@roll-n.hu
Internet: www.roll-n.hu

Iceland

Fást ehf
Kollunarklettsvegur 4
104 Reykjavík
Phone: +354 587 6677
Fax: +354 587 6690
E-mail: jon@fast.is
Internet: www.fast.is

India (Northern India)

Speciality Urethanes Private Limited
N/19, Additional MIDC, area Satara
Maharashtra 415 004
Phone: +91 2162 240721/22/23
Fax: +91 2162 240724
E-mail: anuj@suprathane.com
Internet: www.suprathane.com

India (Southern India)

H.M. Gulamali
H.O. 146, Broadway
Chennai 600 108
Phone: +91 44 4216 1010 / 2020
Mob.: +91 98400 52860
E-mail: info@hmg.co.in

Indonesia

PT Buana Mas Prestasi
Hardware Tools & Machinery Co., LTD.
Jl. Pangeran Jayakarta 46
Blok A No. 7
Jakarta Pusat 10730
Phone: +62 21 628 6413
Fax: +62 21 639 6938
E-mail: emgun@dnet.net.id

Iran

Kalaye Baratar Co. (PJV)
No. 83, Asad Abadi St.
Qazvin 34188-14699
PO Box 34145-1133
Phone: +98 28 33570026 / 33570028
Fax: +98 28 33220677 / 33237706
E-mail: info@yektarahro.com

Addresses of Blickle sales subsidiaries and representative offices

Ireland

Parnells
A1-A2 Southcity Business Centre
Whitestown Way, Tallaght
Dublin D24 HT95
Phone: +353 1 452 0482
E-mail: info@parnell.eu
Internet: www.parnells.eu

Israel

A. Chemlani Technologies Ltd.
6 Ha'charuv Ave., Hi-Lev Area
2016500 BAR-LEV INDUSTRIAL ZONE
Phone: +972 4 841 5395
Fax: +972 4 841 5397
E-mail: sales@chemlani.co.il
Internet: www.chemlani.co.il

Italy

Blickle Italia S.r.l.
Via Lavoratori Autobianchi, 1
Edificio 9
20832 Desio (MB)
Phone: +39 0362 186731
Fax: +39 0362 1867350
E-mail: info@blickle.it
Internet: www.blickle.it

Japan

Nikkai KMO Co., Ltd.
Nomura-Umeda A 707
4-Tsuruno-Chou,Kita-ku,Osaka-Shi
Osaka, 530-0014
Phone: +81 6 7174 1474
Fax: +81 50 3737 1356
E-mail: info@nikkai-kmo.com
Internet: www.nikkai-kmo.com

SISIKU ADDKREIS CORPORATION
4th Fl. MARUSHO-Bldg.
1-16-15, Nagadohe
Kanazawa 9200867
Phone: +81 76 221 0449
Fax: +81 76 223 0449
E-mail: info@sisiku.com
Internet: www.sisiku.com

Kazakhstan

Vneshpromimport Ltd.
Moldagulovoi Str. 45 Office 82
050004 Almaty
Phone: +7 727 2710348
E-mail: vneshprom@mail.ru

Promwheels Ltd.
Zhenis ave. 72
010000 Nur-Sultan, Saryarka district
Phone: +7 7172 76 83 62
E-mail: info@p-w.kz
Internet: www.promwheels.kz

Kuwait

Bin Nisf Gen. Trdg. & Contg. Co
PO Box 871
Safat 13009
Phone: +965 1822244
Fax: +965 24839353
E-mail: binnisf@binnisf.com
Internet: www.bin-nisf.com

Latvia

AB TRANSYSTEMS SIA
Maskavas ielā 227
1019 Riga
Phone: +371 67 140 102
Fax: +371 67 140 103
E-mail: info@abtransystems.lv
Internet: www.abtransystems.lv

Lithuania

Kronsteinu ratuku centras, UAB
Priegliaus g. 8
06269 Vilnius
Phone: +370 5 2308031
Fax: +370 5 2308030
E-mail: info@ratukai.lt
Internet: www.ratukai.lt

Luxembourg

Pfeifer Sogequip S.à.r.l.
Zone Industrielle
Schiffange-Foetz
3844 Schiffange
Phone: +352 57 42 42
Fax: +352 57 42 62
E-mail: info@pfeifer-sogequip.lu
Internet: www.pfeifer-sogequip.lu

Malaysia

GLOBUS
GLOBUS CASTORS (M) SDN BHD
No. 8, Lorong Pala 5, Kawasan
Industri Permatang Tinggi,
14000 Bukit Mertajam, Penang
Phone: +604-3054918
Fax: +6017-4091118
E-mail: ronnie6928@gmail.com

Malta

Multitrade Ltd.
Siggiewi Road
Zebbug ZBG 2301
Phone: +356 2146 5006
Fax: +356 2146 0195
E-mail: admin@multitrademalta.com
Internet: www.multitrademalta.com

Mauritius

Nuco Ltd.
Cascade Road
11219 Pailles
Phone: +230 286-2941
+230 212-9235
Fax: +230 286-2956
E-mail: sales@nucoltd.com

Mexico

Nuevas Industrias Rodamex SA de CV
Saturno No. 25, Fraccionamiento
Nueva Industrial Vallejo
CP 07700 México DF
Phone: +52 55864888
Fax: +52 10551139 - 43
E-mail: ventasblickle@rodamex.com.mx
Internet: www.rodamex.com.mx

Morocco

Comptoir du Roulement
12, Route des Ouled Ziane
Casablanca Maroc
Phone: +212 522 317656 / 312895
Fax: +212 522 542538 / 315784
E-mail: comptoir_roulement@cdr.co.ma

Netherlands

Blickle Wielen B.V.
Hoofdveste 32
3992 DG Houten
Phone: +31 30 241 15 94
Fax: +31 30 241 02 77
E-mail: info@blickle.nl
Internet: www.blickle.nl

New Zealand

Wheelco
160 Taurikura Drive
Tauriko
Tauranga 3110
Phone: 07 578 3030
Fax: 07 579 9730
E-mail: sales@wheelco.co.nz
Internet: www.wheelco.co.nz

Nigeria

BG Wheels West Africa Limited
19 Town Planning
Ilupeju, Lagos
Phone: +234 (0) 1 293 1114
Mob.: +234 (0) 802 340 2006
E-mail: info@rhabe.com

Norway

Blickle Norge AS
Varnesveien 34
Falkenstein Næringspark
3189 Horten
Phone: +47 3308 4920
Fax: +47 3308 4921
E-mail: firmapost@blickle.no
Internet: www.blickle.no

Pakistan

M/S United Trading
302, Mehrab Market Kutchi Gali#1
Marriot Road
Karachi
Phone: +92 21 35312117-8, 35450500
Fax: +92 21 35312119
E-mail: unitedtr@cyber.net.pk

Peru

JR Internacional Company S.A.C.
Calle José de Rivadeneira 692
Urb. Sta. Catalina – La Victoria
Lima 13
Phone: +51 1 265 1157
E-mail: ventas@jrintercompany.com
www.jrintercompany.com

Poland

PROMAG S.A.
ul. Romana Maya 11
61-371 Poznań
Phone: +48 (61) 65 54 555
Infoline: 801 005 112
E-mail: kola@promag.pl
Internet: www.promag.pl

Portugal

Rodalgés Equipamentos Industriais, Lda.
Zona Ind. Monte da Barca, Lote 13
2100-051 Coruche
Phone: +351 243 611 040
Fax: +351 243 611 049
E-mail: info@rodalges.pt
Internet: www.rodalges.pt

Qatar

Mars Trading & Contracting Co.
PO Box 148
DOHA
Phone: +974 44447747
Fax: +974 44601290
E-mail: mars@qatar.net.qa
Internet: www.marsqatar.com

Romania

Blickle Romania S.R.L.
Maramuresului 57
400246 Cluj-Napoca
E-mail: info@blickle.ro
Internet: www.blickle.ro

Russia

Syndic Ltd.
Botkinskaya Str. b 15
194044 St. Petersburg
Phone: +7 812 336-90-85
Fax: +7 812 336-90-85
E-mail: info@syndic.ru
Internet: www.syndic.ru

Syndic Ltd.
3rd Mytishchinsky Str. 16/2
129626 Moscow
Phone: +7 495 660-14-49
Fax: +7 495 660-14-49
E-mail: info@syndic-c.ru
Internet: www.syndic-c.ru

Evrokolesa Ltd.
Novorossiysk Str. d. 238 / 1
350059 Krasnodar
Phone: +7 (861) 202-50-27
E-mail: krasnodar@e-w.ru
Internet: www.e-w.ru

Addresses of Blickle sales subsidiaries and representative offices

Evrokolesa Ltd.
Meshchersky Boulevar 11
603070 N. Novgorod
Phone: +7 (831) 262-13-52
E-mail: nnovgorod@e-w.ru
Internet: www.e-w.ru

Evrokolesa Ltd.
Belomorskaya Str. d. 69B
420085 Kazan
Phone: +7 (843) 212-20-87
E-mail: kazan@e-w.ru
Internet: www.e-w.ru

Evrokolesa Ltd.
Academica Schwartz Str. d. 17
620010 Ekaterinburg
Phone: +7 (343) 288-70-08
E-mail: ekaterinburg@e-w.ru
Internet: www.e-w.ru

Evrokolesa Ltd.
Kozhzhavodskaya Str. 10-a
454084 Chelyabinsk
Phone: +7 (351) 200-37-14
E-mail: chelyabinsk@e-w.ru
Internet: www.e-w.ru

Evrokolesa Ltd.
Zhurinskaya Str. d. 80/6, office 9
630005 Novosibirsk
Phone: +7 (383) 388-68-47
E-mail: novosibirsk@e-w.ru
Internet: www.e-w.ru

Saudi Arabia
Nazar K. Al-Dilijan & Sons Holding Co.
PO Box 3880
Dammam 31481
Phone: +966 (13) 8344420
Fax: +966 (13) 8335682
E-mail: sales@nkd.com.sa
Internet: www.nkd.com.sa

Jeddah Branch
-Saudi-Arabia-
Phone: +966 (12) 6022133
Fax: +966 (12) 6022133
E-mail: salesjeddah@nkd.com.sa

Riyadh Branch
-Saudi-Arabia-
Phone: +966 (11) 4477295
Fax: +966 (11) 4470527
E-mail: salesriyadh@nkd.com.sa

Serbia
Jobix-Nonnenmann
Vuka Karadzica 15
22300 Stara Pazova
Phone: +381 22-311-706
Fax: +381 22-316-380
E-mail: jobixsp@ptt.rs
Internet: www.jobix-nonnenmann.com

Singapore
Kheng Yew Trading Pte. Ltd.
234 Balestier Road
Singapore 329698
Phone: +65 6252 6622
Fax: +65 6253 7911
E-mail: sales@khengyew.com.sg
Internet: www.khengyew.com

Slovakia
Blickle, a.s.
Mařikova 32
621 00 Brno
Phone: +420 541 420 821
Fax: +420 541 420 820
E-mail: info@blickle.cz
Internet: www.blickle.cz

Slovenia
STALUS,
trgovina, storitve in svetovanje, d. o. o.
Savije 89
1000 Ljubljana
Phone: +386 1 580 78 20
Fax: +386 1 563 24 66
E-mail: info@stalus.si
Internet: www.stalus.si

South Africa
Moducast SA (Pty) Ltd.
Sunridge Park
33 Lily Avenue
Port Elizabeth 6045
Phone: +27 41 4841523
Fax: +27 41 48 44965
E-mail: lscanlen@trilogiq.co.za

South Korea
Cofacs Korea Corporation
Korea Business Center, 904
Gangnam-daero 309, Seocho-gu
06628 Seoul
Phone: +82 02 521 5288
Fax: +82 02 521 5289
E-mail: cofacs@cofacs.co.kr
Internet: www.cofacs.co.kr

Spain
Blickle Hispania, S.A.
Travessia Prat de la Riba, 98
08849 Sant Climent de Llobregat
(Barcelona)
Phone: +34 93 659 23 32
Fax: +34 93 659 19 08
E-mail: info@blickle.es
Internet: www.blickle.es

Blickle Hispania, S.A.
Avda. Ribera del Loira, 46
28042 Madrid
Phone: +34 910 607 563
Fax: +34 910 607 423
E-mail: info@blickle.es
Internet: www.blickle.es

Sweden
Blickle AB
Box 22157 / Muskötgatan 23
250 23 Helsingborg /
254 66 Helsingborg
Phone: +46 42 185170
E-mail: info@blickle.se
Internet: www.blickle.se

Switzerland
Blickle Räder+Rollen GmbH
Shoppingmeile Zone 3
Kernenriedstrasse 1
3421 Lyssach
Phone: +41 34 448 66 66
Fax: +41 34 448 66 69
E-mail: info@blickle-raeder.ch
Internet: www.blickle-raeder.ch

Syria
Abdul Kader Abou-Rikab
Company/Partners
Al Kuwatli Street 6, Hama
Phone: +963 33 22481810
Fax: +963 33 22481811
Mob.: +963 940 639465
E-mail: abdul kader@abou-rikab.com
Internet: www.abou-rikab.com

Tunisia
Ets. Boudrant
53, Avenue de Carthage
1000 Tunis – R.P.
Phone: +216 71 340244
Fax: +216 71 348910
E-mail: info@boudrant.com.tn
Internet: www.boudrant.com.tn

Turkey
Blickle Sanayi Tekerlekleri Tic. Ltd. Şti.
Atatürk Mahallesi - Bostancı: Dudullu Yolu
Caddesi
Kerem Bey Sokak NO: 1/1
Özdemir Plaza
34758 Ataşehir/Istanbul
Phone: +90 216 455 82 62
Fax: +90 216 455 83 22
E-mail: info@blickle.com.tr
Internet: www.blickle.com.tr

Ukraine
Torgowyi Dom Skladskaya Tehnika Ltd.
Lineynaya Str. 17b
03038 Kiev
Phone: +380 44 528 5460
Fax: +380 44 528 4160
E-mail: koleso.vst@gmail.com
Internet: www.skladtex.com.ua
Internet: www.kolesa-roliki.kiev.ua

United Arab Emirates
Al Wafa General Trading Co. L.L.C.
PO Box 11157
Dubai
Phone: +971 4 2557777
Fax: +971 4 2388832
E-mail: nasamo@emirates.net.ae

United Kingdom
Blickle Castors & Wheels Ltd.
No. 30 Vincent Avenue
Crownhill, Milton Keynes
Bucks MK8 0AB
Phone: +44 (0) 1908 560904
Fax: +44 (0) 1908 260510
E-mail: sales@blickle.co.uk
Internet: www.blickle.co.uk

Uruguay
Essen Ltda.
Miguelete 1824
11800 Montevideo
Phone: +598 292 900 92
Fax: +598 292 900 92
E-mail: ventas@essenltda.com.uy
Internet: www.essenltda.uy

USA
Blickle U.S.A. Wheels and Casters Inc.
75 Coweta Industrial Parkway
Newnan, GA 30265
Phone: +1 888 558 7878
Fax: +1 470 414 2332
E-mail: info@blickle.us
Internet: www.blickle.us

Vietnam
Hoa Thinh Production & Trading
Joint Stock Company
11E - C Road - Tan Tao Industrial Park
Binh Tan Dist. - HCMC
Phone: +84 28 3751 5778; 3751 5779
Fax: +84 28 3751 5924
E-mail: castorwheels@hoathinh.com.vn
Internet: www.hoathinh.com.vn

Yemen
Capital Light Stores
Alkasr Algmhori Street
Sana'a
PO Box 655
Phone: +967 1 276385
Fax: +967 1 214145
E-mail: capitallight@y.net.ye

Alphabetic product / series number list

Series Numbers	Page	Series Numbers	Page	Series Numbers	Page	Series Numbers	Page
ALB.....	67, 307	BH-VPP.....	194	BOD-ALBS.....	499	BX-POEV.....	403, 405
ALBS.....	68, 319, 499	BH-VSTH.....	498	BOD-ALEV.....	227	BX-POH.....	456
ALES.....	60, 209	BH-VW.....	205	BOD-ALTH.....	292	BX-POHI.....	461
ALEV.....	63, 221, 429–430, 567, 602	BH-VWPP.....	203	BOD-GTH.....	292	BX-POSI.....	451
ALSI.....	71, 448	BHF-ALEV.....	476	BOD-SE.....	499	BX-POTH.....	413
ALST.....	66, 294, 433, 499, 567	BHF-ALST.....	480	BOD-SPO.....	366	BX-POTHS.....	409, 412
ALTH.....	65, 274, 432, 499, 567–568	BHF-ALTH.....	483	BOD-VSTH.....	292	BX-TPA.....	399
ALTPU.....	82, 602	BI-G.....	469	BPA-PATH.....	138	BX-VPP.....	401
B-ALB.....	308	BIK-G.....	469	BPA-POA.....	497	DS.....	64, 236
B-ALEV.....	222	BK-ALB.....	309	BPA-TPA.....	124	DSPK.....	75, 534
B-ALSI.....	449	BK-ALBS.....	320	BPA-VPA.....	130	DSPKGSPO.....	75, 532
B-ALST.....	295	BK-ALEV.....	223	BPFE-ALEV.....	477	FPO.....	74, 520
B-ALTH.....	275	BK-ALST.....	296	BPFE-ALTH.....	484	FPOB.....	73, 518
B-G.....	377	BK-ALTH.....	276	BPX-PGV.....	603	FPTH.....	72, 515
B-GEV.....	595	BK-G.....	378	BPXA-PATH.....	395	FPU.....	72, 514
B-GSPO.....	497	BK-GSPO.....	497	BPXA-PO.....	397	FSSTH.....	73, 517
B-GST.....	595	BK-PATH.....	262	BPXA-TPA.....	391	FSVU.....	73, 519
B-GTH.....	595	BK-PO.....	351	BPXA-VPA.....	393	FTH.....	73, 516
B-P.....	245	BK-POEV.....	217	BRA-PATH.....	137	G.....	70, 376, 436, 468
B-PATH.....	259, 261	BK-POH.....	454	BRA-POA.....	496	GB.....	67, 312–313, 569
B-PHN.....	464	BK-POHI.....	459	BRA-TPA.....	123	GBA.....	78, 552
B-PO.....	345, 348–349, 497	BK-POTH.....	265	BRA-VPA.....	128	GBN.....	76, 544–545
B-POES.....	210	BK-POTHS.....	272	BRXA-PATH.....	394	GBV.....	63, 234
B-POEV.....	214, 216, 497	BK-POW.....	342	BRXA-PO.....	396	GEV.....	77, 550
B-POH.....	454	BK-RD.....	208	BRXA-TPA.....	390	GEVN.....	75, 540
B-POHI.....	459	BK-SE.....	229	BRXA-VPA.....	392	GSPO.....	70, 368, 496–499
B-POSI.....	449	BK-SPO.....	358	BS-ALBS.....	324	GST.....	67, 301
B-POTH.....	264	BK-VSTH.....	497	BS-G.....	381	GSTA.....	77, 551
B-POTHS.....	271	BKFG-TPA.....	154–155	BS-GB.....	316	GSTN.....	76, 543
B-POW.....	341	BKFGX-TPA.....	155	BS-GEV.....	235	GTH.....	66, 286–287, 568
B-PP.....	337, 339	BKPA-PATH.....	138	BS-GSPO.....	370	GTHN.....	75, 541–542
B-PPN.....	333, 335	BKPA-POA.....	497	BS-GST.....	305	GVU.....	68, 326, 570
B-RD.....	207	BKPA-POES.....	135	BS-GTH.....	291	GVUN.....	76, 546
B-TPA.....	187	BKPA-TPA.....	124	BS-P.....	247	HB.....	78, 563
B-V.....	201	BKPA-VPA.....	130	BS-PS.....	247	HPO.....	79, 566
B-VE.....	196	BKPXA-PATH.....	395	BS-SE.....	232	HRIG.....	100
B-VEHI.....	443	BKPXA-PO.....	397	BS-SETH.....	285	HLRH / HRLHD.....	101
B-VLE.....	250	BKPXA-TPA.....	391	BS-SPK.....	529	HLRH-SPO.....	506
B-VPP.....	191, 194	BKPXA-VPA.....	393	BS-SPKGSPO.....	527	HLRH-SPO.....	506
B-VSTH.....	497	BKRA-PATH.....	137	BS-SPKVS.....	531	HLRK.....	99
B-VW.....	205	BKRA-POA.....	496	BS-SPO.....	365	HLRK-ALST.....	501
B-VWPP.....	203	BKRA-POES.....	134	BS-SVS.....	384	HLRK-ALTH.....	501
BB.....	81, 589	BKRA-TPA.....	123	BS-VLE.....	251	HLRK-ALTH-F.....	503
BEV...-ZDG.....	80, 586	BKRA-VPA.....	129	BSD-GB.....	317	HLRK-ALTH-HN.....	502
BEV...-ZST.....	81, 587	BKRXA-PATH.....	394	BSD-GSPO.....	499	HLRK-PATH-HYD.....	508
BH-ALB.....	308–310	BKRXA-PO.....	396	BSD-GST.....	306	HLRK-PO.....	501
BH-ALBS.....	320, 322–323	BKRXA-TPA.....	390	BSD-GTH.....	293	HLRK-PO-F.....	503
BH-ALEV.....	222–225	BKRXA-VPA.....	392	BSD-SE.....	233		
BH-ALST.....	295–296, 298–299	BKX-POBS.....	416	BSD-SPO.....	367		
BH-ALTH.....	275–276, 278, 280	BKX-POEV.....	406	BSD-VSTH.....	293		
BH-DSPK.....	535	BKX-POH.....	456	BSEV.....	80, 584–585		
BH-DSPKGSPO.....	533	BKX-POHI.....	461	BSFE-GB.....	488		
BH-G.....	378–379	BKX-POTH.....	414	BSFE-GST.....	482		
BH-GB.....	314–315	BKX-SPO.....	421	BSFE-GTH.....	486		
BH-GSPO.....	369, 498	BO-ALEV.....	226	BSFE-SE.....	479		
BH-GST.....	302–303, 595	BO-ALST.....	300	BSFN-GB.....	487		
BH-GTH.....	288–289, 595	BO-ALTH.....	281	BSFN-GST.....	481		
BH-PATH.....	262	BO-G.....	380, 470	BSFN-GTH.....	485		
BH-PO.....	349, 351–353	BO-GB.....	314	BSFN-SE.....	478		
BH-POEV.....	216–217, 219–220	BO-GST.....	302, 304	BSSD-GSPO.....	371		
BH-POTH.....	264–265, 267–269	BO-GTH.....	288, 290	BTH.....	81, 588		
BH-POTHS.....	272–273	BO-PO.....	354	BX-PATH.....	407		
BH-RD.....	207–208	BO-SE.....	230–231	BX-PHN.....	466		
BH-SE.....	229–230	BO-SETH.....	284	BX-PO.....	417, 420		
BH-SETH.....	283	BO-SPO.....	364	BX-POBS.....	412		
BH-SPO.....	358, 360–361, 363, 498	BOD-ALB.....	311				
BH-SVS.....	383, 498						
BH-V.....	201						

Alphabetic product / series number list

Series Numbers	Page	Series Numbers	Page	Series Numbers	Page	Series Numbers	Page
HRLK-PO-HN	502	LER-POEV	215, 496	LI-POH	454	LKFGX	87
HRLK-PO-VS	504	LER-PP	338	LI-POHI	459	LKFGX-TPA	155
HRLK-POEV	501	LER-PPN	334	LI-POSI	449	LKPA-GSPO	497
HRLK-SPO	501	LER-TPA	188	LI-VEHI	443	LKPA-PATH	138
HRLK-SPO-HN	502	LER-VE	197	LI-VKHT	446	LKPA-POA	145, 497
		LER-VPP	192			LKPA-POES	135
HRLK...-F	100	LEX	96	LIK	98	LKPA-TPA	124
HRLK...-HN	99	LEX-PATH	407	LIK-G	469	LKPA-VPA	130
HRLK...-HYD	101	LEX-PO	417	LIK-POH	454	LKPA-VSTH	142, 497
HRLK...-VS	100	LEX-POBS	415	LIK-POHI	459		
HRLSD	101	LEX-POEV	403	LIKX	99	LKPXA-PATH	395
HRLSD-GTH	507	LEX-POTHS	409	LIKX-POH	456	LKPXA-PO	397
HRLSD-SPO	507	LEX-TPA	399	LIKX-POHI	461	LKPXA-TPA	391
		LEX-VPP	401			LKPXA-VPA	393
HRP / HRSP	100	LEXR	96	LIO	98	LKR	92
HRP-POA	505	LEXR-PATH	408	LIO-G	470	LKR-ALBS	321
HRSP-GSPO	505	LEXR-PO	418	LIR	97	LKR-ALST	297
HRSP-POA	505	LEXR-POEV	404	LIR-ALSI	450	LKR-ALTH	277
HTH	78, 560-562	LEXR-POTHS	410	LIR-PHN	465	LKR-GSPO	496
		LEXR-TPA	400	LIR-POH	455	LKR-POEV	218
		LEXR-VPP	402	LIR-POHI	460	LKR-POTH	266
HTHW	79, 564-565			LIR-POSI	450	LKR-SPO	359
		LEXZ	96	LIR-VEHI	444	LKR-VSTH	496
L	91	LEXZ-PO	419			LKRA-GSPO	496
L-ALB	308	LEXZ-POTHS	411	LIX	98	LKRA-PATH	137
L-ALEV	222	LEZ	91	LIX-PHN	466	LKRA-POA	144, 496
L-ALST	295	LEZ-PO	347	LIX-POH	456	LKRA-POES	134
L-ALTH	275	LEZ-VE	198	LIX-POHI	461	LKRA-TPA	123
L-G	377	LEZ-VPP	193	LIX-POSI	451	LKRA-VPA	128-129
L-GEV	594			LIX-VKHT	447	LKRA-VSTH	141, 496
L-GSPO	497	LH	92, 498	LIXR	98	LKRXA-PATH	394
L-GST	594	LH-ALB	310	LIXR-PHN	467	LKRXA-PO	396
L-GTH	594	LH-ALBS	322	LIXR-POH	457	LKRXA-TPA	390
L-P	245	LH-ALEV	224	LIXR-POHI	462	LKRXA-VPA	392
L-PATH	261	LH-ALST	298	LIXR-POSI	452		
L-PO	348-349	LH-ALTH	278	LK	92	LKX	97
L-POEV	216	LH-G	379	LK-ALB	309	LKX-POBS	416
L-POTH	264	LH-GB	314	LK-ALBS	320	LKX-POEV	406
L-POTHS	271	LH-GSPO	369, 498	LK-ALEV	223	LKX-POTH	414
L-POW	341	LH-GST	302	LK-ALST	296	LKX-SPO	421
L-PP	339	LH-GTH	288	LK-ALTH	276		
L-PPN	335	LH-PO	352	LK-G	378	LMDA	86
L-RD	207	LH-POEV	219	LK-GSPO	497	LMDA-PATH	139
L-V	201	LH-POTH	267-268	LK-PATH	262	LMDA-POA	146
L-VLE	250	LH-SE	230	LK-PO	350-351	LMDA-TPA	125
L-VPP	194	LH-SETH	283	LK-POEV	217	LMDA-VPA	131
L-VSTH	497	LH-SPO	360-361, 498	LK-POTH	265	LO	93
L-VV	205	LH-SVS	383, 498	LK-POTHS	272	LO-ALEV	226
L-VWPP	203	LH-VSB	314	LK-POW	342	LO-AVLE	226
		LH-VSTH	288, 498	LK-RD	208	LO-ALST	300
LD	99, 500	LHD	93, 499	LK-SE	229	LO-ALTH	281
LD-PO	500	LHD-ALB	311	LK-SPO	357-358	LO-G	380
LD-POA	500	LHD-ALBS	325, 499	LK-VSTH	497	LO-GST	304
LD-VSTH	500	LHD-ALEV	227	LKD / LKDG	89-90	LO-GTH	290
LDA	86	LHD-ALST	499	LKD-PATH	172	LO-PO	354
LDA-PATH	140	LHD-ALTH	499	LKD-PATH	173	LO-SE	231
LDA-POA	147	LHD-GSPO	499	LKDB-PUA	171	LO-SETH	284
LDA-TPA	126	LHD-POEV	499	LKDG / LKDB	89	LO-SPO	364
LDA-VPA	132	LHD-SE	227, 499	LKDG-PATH	174-175	LOD	93
LE	90	LHD-SPO	499	LKDG-PUA	170	LOD-ALTH	292
LE-PATH	259	LHD-VSTH	499	LKDGX-PATH	178-179	LOD-GTH	292
LE-PO	345, 497	LHF	94	LKDX / LKDGX	90	LOD-SPO	366
LE-POES	210	LHF-ALEV	476	LKDX-PATH	176-177	LOD-VSTH	292
LE-POEV	214, 497	LHF-ALST	480	LKFG	87	LPA	497
LE-PP	337	LHF-ALTH	483	LKFG-TPA	154	LPA / LKPA	86
LE-PPN	333	LHZ	92			LPA-GSPO	497
LE-TPA	187	LHZ-ALTH	279			LPA-PATH	138
LE-VE	196	LHZ-SPO	362			LPA-POA	145, 497
LE-VPP	191	LI	97			LPA-TPA	124
LER	91	LI-ALSI	449			LPA-VPA	130
LER-PATH	260	LI-G	469			LPA-VSTH	142, 497
LER-PO	346, 496	LI-PHN	464				
LER-POES	211						

Alphabetic product / series number list

Series Numbers	Page	Series Numbers	Page	Series Numbers	Page
LPFE.....	95	LUH.....	93	RVU.....	80, 576, 578
LPFE-ALEV.....	477	LUH-ALBS.....	323	SE.....	63, 228, 499
LPFE-ALTH.....	484	LUH-ALEV.....	225	SETH.....	66, 282
LPX.....	102	LUH-ALST.....	299	SPK.....	74, 528
LPX-PGV.....	603	LUH-ALTH.....	280	SPKGSP0.....	74, 526
LPXA / LKPXA.....	96	LUH-GB.....	315	SPKVS.....	74, 530
LPXA-PATH.....	395	LUH-GST.....	303	SPKVSN.....	76, 547
LPXA-PO.....	397	LUH-GTH.....	289	SPO.....	69, 355-356, 498-499
LPXA-TPA.....	391	LUH-PO.....	353	SVS.....	70, 382, 437, 498
LPXA-VPA.....	393	LUH-POEV.....	220	TPA.....	60, 122, 186, 426
LPZ.....	102	LUH-POTH.....	269	V.....	62, 199-200, 428
LPZ-ALEV.....	604	LUH-POTHS.....	273	VE.....	61, 195, 428
LPZ-ALTPU.....	604	LUH-SPO.....	363	VEHI.....	70, 442
LR.....	91	LWG-TPA.....	159-161	VKHT.....	71, 445
LR-GSPO.....	496	LWGX-TPA.....	165-167	VLE.....	65, 249
LR-VSTH.....	496	LWK / LWG.....	88	VLEA.....	77, 549
LRA.....	496	LWK-TPA.....	156-158	VPA.....	60, 127, 427
LRA / LKRA.....	86	LWKX / LWGX.....	88-89	VPP.....	61, 189-190
LRA-GSPO.....	496	LWKX-TPA.....	162-164	VSB.....	67, 312
LRA-PATH.....	137	LX.....	97	VSTH.....	66, 286, 496-500, 568
LRA-POA.....	144, 496	LX-PO.....	420	VSU.....	78, 553
LRA-TPA.....	123	LX-POEV.....	405	VW.....	62, 204
LRA-VPA.....	128	LX-POTH.....	413	VWPP.....	62, 202
LRA-VSTH.....	141, 496	LX-POTHS.....	412		
LRXA / LKRXA.....	95	P.....	64, 243-244		
LRXA-PATH.....	394	PA.....	77, 548		
LRXA-PO.....	396	PATH.....	61, 136, 258, 431		
LRXA-TPA.....	390	PGV.....	82, 602		
LRXA-VPA.....	392	PHN.....	72, 463		
LS.....	94	PK.....	64, 242		
LS-ALBS.....	324	PO.....	69, 343-344, 435, 496-497, 500, 567		
LS-G.....	381	POA.....	61, 143, 496-497, 500		
LS-GB.....	316	POBS.....	68, 318		
LS-GEV.....	235	POES.....	60, 133, 209		
LS-GSPO.....	370	POEV.....	63, 212-213, 496-497, 499-500		
LS-GST.....	305	POH.....	71, 453		
LS-GTH.....	291	POHI.....	72, 458		
LS-P.....	247	POSI.....	71, 448		
LS-PS.....	247	POTH.....	65, 263		
LS-SE.....	232	POTHS.....	65, 270		
LS-SETH.....	285	POW.....	69, 340		
LS-SPO.....	365	PP.....	69, 336, 434		
LS-SVS.....	384	PPN.....	68, 332		
LS-VLE.....	251	PS.....	64, 246		
LSD.....	94, 499	RB.....	80, 571-575, 578-579		
LSD-GB.....	317	RD.....	62, 206		
LSD-GSPO.....	371, 499	REV.....	79, 571-574, 576		
LSD-GST.....	306	RTH.....	79, 571-579		
LSD-GTH.....	293				
LSD-SE.....	233				
LSD-SPO.....	367				
LSD-VSTH.....	293				
LSFE.....	95				
LSFE-GB.....	488				
LSFE-GST.....	482				
LSFE-GTH.....	486				
LSFE-SE.....	479				
LSFN.....	95				
LSFN-GB.....	487				
LSFN-GST.....	481				
LSFN-GTH.....	485				
LSFN-SE.....	478				
LSSD.....	94				
LSSD-GSPO.....	371				

Alphabetic keywords list

Index	Page	Index	Page	Index	Page
Adapter plate.....	607	Jack.....	114, 606	Top plate fitting.....	104, 106–111
Air cargo castor.....	614	Levelling castors.....	494–495	Total height.....	44
Antistatic.....	50, 422–437	Light-duty castors.....	45, 118–148, 390–398, 612–613	Transport unit castors.....	45, 614–615
Autoclave.....	440–441, 602–604	Load capacity (static and dynamic).....	46	Tread.....	44, 52–59
Axle tube.....	117	Manoeuvrability.....	47	Tread and tyre hardness.....	48
Ball bearing.....	84	Mounting height.....	44	Triple castor.....	614
Ball bearing (C), central ball bearing.....	84–85	MOVE.....	152–153	Truck lock.....	114, 606
Ball bearing (CC).....	85	Non-marking.....	52–57	Tyre.....	44
Ball bearing cover.....	84–85	Non-staining.....	120–121	Vulkollan.....	56, 256–257, 512–513, 538–539, 556–559
Ball bearing seals.....	85	Nylon.....	57, 120–121, 330–331, 388–389, 424–425, 492–495, 512–513, 556–559	WAVE.....	152–153
Besthane.56, 256–257, 475, 512–513, 538–539, 556–559, 582–583		Offset.....	44	Wear resistance.....	49
Besthane Soft...56, 256–257, 388–389, 492–495		Operating noise.....	48	Wheel.....	44
Blickle Comfort.....	53, 184–185	Operating temperature.....	50	Wheel bearing.....	84–85
Blickle EasyRoll.....	53, 184–185, 388–389, 424–425, 475, 492–495, 556–559, 594–595	Operational comfort.....	48	Wheel brake.....	112–113, 115
Blickle Soft.....	52, 184–185	Pallet truck castors.....	556–559	Wheel for stackers and forklift trucks ...	556–559, 620
Blickle SoftMotion.....	53, 120–121, 184–185	Plain bore.....	84	Wheel series.....	60–82
Bolt hole (fitting).....	104	Plate (fitting).....	104, 106–111	Wheel set.....	623
Bracket series.....	86–102	Plug-in pin.....	105	Zig-zag profile.....	241, 538–539, 582
Brake.....	112–114, 594–597	Ply rating.....	54, 241, 539		
Bumper.....	116, 148, 169, 398	Polypropylene.....	57, 330–331, 424–425		
Castor.....	44	Polyurethane.....	55–56		
Central brake system.....	113	Press-on band.....	44, 582–583		
Central-stop.....	113, 168	Profile types.....	248, 252		
Chain steering system.....	617	Puncture-proof.....	52, 184–185, 241		
Chemical resistance.....	50–51	Radstop.....	113		
Clamping length.....	512–513, 556–559	Ribbed profile.....	248, 252		
Clamping set.....	553, 623	Rim.....	44		
Compact castor.....	492–493	Roller bearing.....	84		
Compressed cast nylon ...57, 330–331, 492–495, 524–525		Rolling resistance.....	49		
Corrosion.....	50	Running wheel.....	559, 610		
Corrosion resistant.....	50, 152–153, 388–389, 440–441, 601–604	Safety factor.....	46		
Crowned (convex).....	55–56	Sandwich wheel.....	340–342		
Customising.....	592–593	Scaffolding castor.....	614		
Dead man's brake.....	114, 594–596	Shore hardness.....	48		
Direction reset device.....	116	Smooth rolling performance.....	48		
Directional lock.....	115	Smooth rolling quality.....	53, 184–185, 388–389, 424–425, 475, 492–495, 557–559, 582, 601–604		
Drive wheel.....	536–547, 611	Soft rubber.....	52–53, 120–121, 184–185		
Drum brake.....	114, 594–596	Sothane.....	55, 256–257, 424–425, 475, 482, 492–495, 538–539, 556–559, 594–595		
Elastic solid rubber.....	53, 184–185, 388–389, 424–425, 475, 492–495, 556–559, 582, 594–595, 602–604	Special versions.....	590		
Electric drive system.....	600	Spherical roller bearing.....	85		
Electrically conductive.....	50, 422–425	Spring-loaded castors.....	475, 618		
End wheel.....	117	Stainless steel.50, 152–153, 388–389, 440–441, 601–604, 619			
Environmental factors.....	50	Standard application conditions.....	46		
ErgoMove.....	600	Standard solid rubber.....	52, 184–185, 388–389, 424–425		
Expander (fitting).....	105, 148, 168, 398	Starlock cap.....	117		
Extrathane.....	55, 120–121, 256–257, 424–425, 475, 492–495, 512–513, 538–539, 556–559, 582–583, 594–595	Starting resistance.....	49		
Fitting types.....	104–105	Stem (fitting).....	104		
Fixed castor.....	44	Stop-fix.....	112		
Flanged wheel.....	524–525	Stop-top.....	112		
Floor pressure.....	48	Swivel castor.....	44		
Floor surface preservation.....	48	Swivel head.....	44		
FLOW.....	154–155	Swivel head separate.....	608		
Foot guard.....	116, 622	Swivel resistance.....	49		
Forklift trucks.....	556–559, 620	Tailor-made solutions.....	592–593		
FTF / FTS.....	621	TempLine.....	53, 440–441		
Furniture castor.....	170–171	Test conditions.....	45		
Guide rollers.....	512–513, 609	Thermoplastic polyurethane (TPU) ...55, 120–121, 152–153, 256–257, 388–389, 424–425, 508, 512–513, 602–604			
Heat-resistant.....	440–441	Thermoplastic rubber-elastomer (TPE).....	52, 120–121, 152–153, 184–185, 388–389, 424–425		
Heavy-duty castor.....	45, 616–618	Thread guard.....	116		
Hub cap / hub end cap.....	117				
Hub keyway.....	538				
Hub length.....	44				
Ideal-stop.....	112				

Blickle product information

All of the information about Blickle products in this catalogue must be taken into consideration when evaluating the liability and obligations of the manufacturer regarding its products, particularly in accordance with Section 4 of the Product Liability Act and Section 3(2) of the Product Safety Act. The manufacturer will not be liable if this information is not complied with.

1.0 Product information and intended use

Wheels and castors are defined as components that are exchangeable and can be attached to units, furniture, transport systems or similar products to render them mobile.

This product information relates to wheels and castors, particularly passively-steered castors (swivel castors), for vehicles and equipment that are temporarily moved by hand (objects) at no faster than walking pace (4 km/h) and not for permanent operation.

Within the context of this product information, wheels and castors are used in the following areas:

Residential:

- e.g. seating, domestic furniture

Services sector:

- general services, e.g. trolleys, office furniture
- Hospitals, e.g. hospital beds

Industrial:

- e.g. transport units for medium and heavy loads

Intended use includes proper installation:

- The product must be fastened to the object at all available points.
- The object must be adequately stable at these points.
- The installation must not impede or alter the functionality of the product.
- Swivel castors must be installed in such a way that they pivot around a vertical axis.
- Fixed castors must be installed in such a manner that their wheel axles are aligned.
- All castors on an object must have the same mounting height.

Special versions must be used for wet rooms, applications in the vicinity of the sea, equipment exposed to the elements or in aggressive environments that lead to increased corrosion.

Special versions must be specified when products are used in a temperature range that is outside of the normal range for the standard products in this catalogue. Standard products must not be exposed to the rated load under these conditions.

The wheel, bracket, brake and axle options form a single functional unit. Blickle only assumes liability for original products.

Clients must take all possible loads into consideration when selecting castors. If they are not taken into consideration, additional safety factors should be used (see Wheel and castor guide on Page 50).

2.0 Incorrect use

The following situations are some examples where wheels and castors are being used incorrectly:

- The wheels and castors are used to carry loads in excess of the maximum load capacity in the catalogue.
- The product is used on an unsuitable and uneven floor.
- The product is used at temperatures that are too high or too low.
- A unit is forcibly moved when the brake is activated or if the brake is used to slow down.
- The product could be affected by particularly aggressive substances.
- The product is affected by unusually severe loads as a result of impact or falls.
- Foreign bodies could penetrate the press-on band.
- The wheels and castors are operated at an excessively high speed.
- Changes are made that were not approved by the manufacturer.
- The wheels and castors are exposed to mechanical damage due to external factors or a collision.

3.0 Product performance

If no specific information is provided about product performance in our catalogues, brochures, service descriptions, etc., you must contact us to determine if our wheels and castors or their components meet your requirements.

Please refer to the relevant DIN, ISO and EN standards for guidance.

Differing from the standard approach for wheels and castors, the brake forces of castors with brake systems are designed to ensure the optimal balance between high brake forces and low actuation forces.

4.0 Product maintenance

Recommended annual maintenance / inspection:

- Lubricant should be added once a year for products with a grease nipple until a small amount of grease comes out of the bearings. We recommend using a multi-purpose calcium complex based grease (such as Renolit CX-EP 2) with a temperature range of between -30°C and 140°C. We recommend using a different grease if the product is used in different application conditions.
- Check that all of the screw fittings are secure.
- Check that the wheel, swivel head, lock, directional lock, brakes and other options are functioning properly.
- Check the play of the wheel bearing and swivel head, ideally in accordance with DIN EN 12530 to 12533. (ISO 22881 to ISO 22884)
- Check the air pressure of pneumatic tyres in accordance with the Blickle General Catalogue.
- Inspect solid rubber tyres and treads for wear and abrasion. For guidance: max. abrasion < 1/2 thread thickness.

We recommend performing the above measures more frequently if you are using the products in non-standard application conditions.

Cleaning agents may only be used if they do not contain any substances that may cause damage or corrosion.

Castors and their components must be replaced as soon as they start functioning incorrectly.

5.0 Product conformity

Up-to-date information about guidelines and standards related to product safety requirements and technical market access requirements (e.g. ATEX, REACH, RoHS, PAK/GS) is available at www.blickle.com.

6.0 Obligation to provide information and instructions

In order to comply with our obligation to provide information, instructions and maintenance guidance in accordance with the Product Liability Act, we provide the following:

- for retailers: catalogues with product and user information
- for processors: catalogues with product and user information
- for users: product and user information

In order to make sure that wheels and castors function properly

- Retailers are obliged to comply with this product information (see 1.0–5.0) and the user information. They are also required to request this information from the manufacturer and pass it on to processors if necessary.
- Processors are obliged to comply with this product information (see 1.0–5.0) and the user information. They are also required to request this information from the manufacturer and pass it on to users if necessary.

Diagrams, drawings, dimensions, etc. are subject to change and are therefore provided on a non-binding basis.

956786 | Edition A1 | 06/2020